

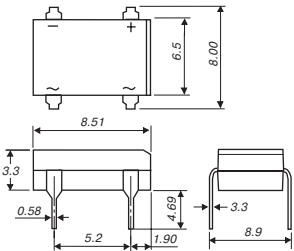
# ДИОДНЫЕ МОСТЫ (однофазные) выпрямительные

Напряжение 50В 65В 100В 125В 200В 400В 600В 800В 1000В

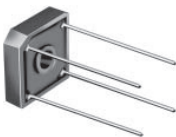
GSIB420 GSIB440 GSIB460 GSIB480 GSIB-3G GSIB2520 GSIB2540 GSIB2560 GSIB-5S MB2M MB4M MB6M MBM MB2S MB4S MB6S TO-269AA(MBS) 0.5A 0.9A B40C800G B80C800G B125C800G B250C800G B380C800G WOG 1.0A B40C800DM B80C800DM B125C800DM B250C800DM B380C800DM DFM 1.5A W05G W01G W02G W04G W06G W08G W10G WOG 12A GBPC1205 GBPC1202 GBPC1204 GBPC1206 GBPC1208 GBPC1210 GBPC,GBPC-W 15A GBPC1505 GBPC1501 GBPC1502 GBPC1504 GBPC1506 GBPC1508 GBPC1510 GBPC,GBPC-W 2A W05G 2W01G 2W02G 2W04G 2W06G 2W08G 2W10G WOG 3A GBPC1005 GBPC101 GBPC102 GBPC104 GBPC106 GBPC108 GBPC110 GBPC1 35A GBPC3505 GBPC3501 GBPC3502 GBPC3504 GBPC3506 GBPC3508 GBPC3510 GBPC,GBPC-W 6A GBPC605 GBPC601 GBPC602 GBPC604 GBPC606 GBPC608 GBPC610 GBPC 25A GBPC2505 GBPC2501 GBPC2502 GBPC2504 GBPC2506 GBPC2508 GBPC2510 GBPC,GBPC-W KBL005 KBL01 KBL02 KBL04 KBL06 KBL08 KBL 10 KBL KBU4A KBU4B KBU4D KBU4G KBU4J KBU4K KBU4L KBU K Тип корпуса

U.B	50	65	100	125	200	400	600	800	1000	Тип корпуса
0.5	-	-	-	-	<b>MB2M</b>	<b>MB4M</b>	<b>MB6M</b>	-	-	MBM
	-	-	-	-	<b>MB2S</b>	<b>MB4S</b>	<b>MB6S</b>	-	-	TO-269AA(MBS)
0.9	-	<b>B40C800G</b>	-	<b>B80C800G</b>	<b>B125C800G</b>	<b>B250C800G</b>	<b>B380C800G</b>	-	-	WOG
1.0	-	<b>B40C800DM</b>	-	<b>B80C800DM</b>	<b>B125C800DM</b>	<b>B250C800DM</b>	<b>B380C800DM</b>	-	-	DFM
1.5	<b>W05G</b>	-	<b>W01G</b>	-	<b>W02G</b>	<b>W04G</b>	<b>W06G</b>	<b>W08G</b>	<b>W10G</b>	WOG
2	<b>2W05G</b>	-	<b>2W01G</b>	-	<b>2W02G</b>	<b>2W04G</b>	<b>2W06G</b>	<b>2W08G</b>	<b>2W10G</b>	WOG
3	<b>GBPC1005</b>	-	<b>GBPC101</b>	-	<b>GBPC102</b>	<b>GPC104</b>	<b>GBPC106</b>	<b>GBPC108</b>	<b>GBPC110</b>	GBPC1
	-	-	-	-	<b>GSIB420</b>	<b>GSIB440</b>	<b>GSIB460</b>	<b>GSIB480</b>	-	GSIB-3G
4	<b>KBU4A</b>	-	<b>KBU4B</b>	-	<b>KBU4D</b>	<b>KBU4G</b>	<b>KBU4J</b>	<b>KBU4K</b>	<b>KBU4L</b>	KBU
	<b>KBL005</b>	-	<b>KBL01</b>	-	<b>KBL02</b>	<b>KBL04</b>	<b>KBL06</b>	<b>KBL08</b>	<b>KBL10</b>	KBL
6	<b>GBPC6005</b>	-	<b>GBPC601</b>	-	<b>GBPC602</b>	<b>GBPC604</b>	<b>GBPC606</b>	<b>GBPC608</b>	<b>GBPC610</b>	GBPC
12	<b>GBPC12005</b>	-	<b>GBPC1201</b>	-	<b>GBPC1202</b>	<b>GBPC1204</b>	<b>GBPC1206</b>	<b>GBPC1208</b>	<b>GBPC1210</b>	GBPC,GBPC-W
15	<b>GBPC15005</b>	-	<b>GBPC1501</b>	-	<b>GBPC1502</b>	<b>GBPC1504</b>	<b>GBPC1506</b>	<b>GBPC1508</b>	<b>GBPC1510</b>	GBPC,GBPC-W
	-	-	-	-	<b>GSIB2520</b>	<b>GSIB2540</b>	<b>GSIB2560</b>	<b>GSIB2580</b>	-	GSIB-5S
25	<b>GBPC25005</b>	-	<b>GBPC2501</b>	-	<b>GBPC2502</b>	<b>GBPC2504</b>	<b>GBPC2506</b>	<b>GBPC2508</b>	<b>GBPC2510</b>	GBPC,GBPC-W
35	<b>GBPC35005</b>	-	<b>GBPC3501</b>	-	<b>GBPC3502</b>	<b>GBPC3504</b>	<b>GBPC3506</b>	<b>GBPC3508</b>	<b>GBPC3510</b>	GBPC,GBPC-W

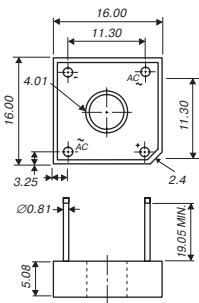
## ГАБАРИТНЫЕ РАЗМЕРЫ



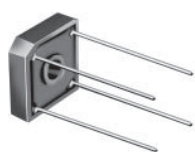
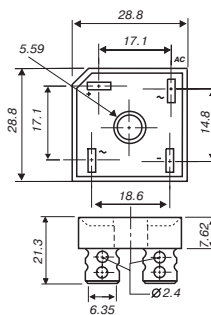
**DFM**



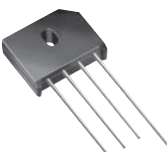
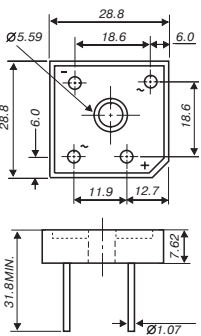
**GBPC1**



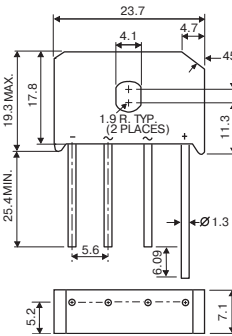
**GBPC**



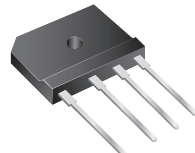
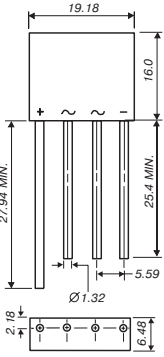
**GBPC-W**



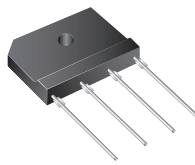
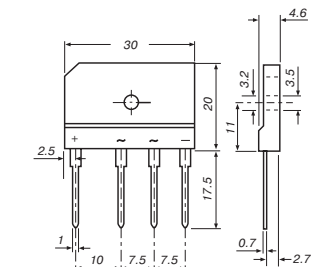
**KBU**



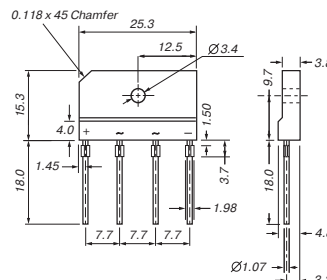
**KBL**



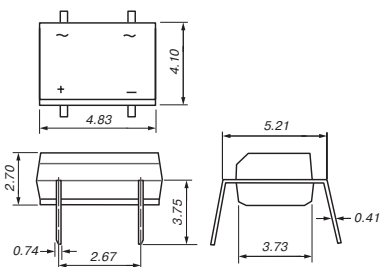
**GSIB-5S**



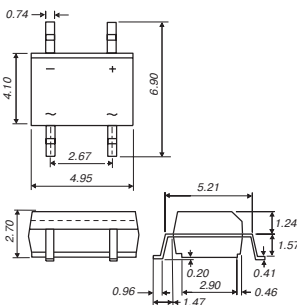
**GSIB-3G**



**MBM**



**TO-269AA (MBS)**



**WOG**

