



## 15W DC-DC Regulated Dual Output

## ASD15H-D series



## ■ Features :

- Wide 4:1 DC input range
- In/out capacitance 1000pF
- Protections: Short circuit/Over load/Over voltage
- 500~1500VDC I/O isolation for D/D
- Built-in EMI filter
- Cooling by free air convection
- Built-in remote ON-OFF control
- 100% full load burn-in test
- Fixed switching frequency at 450KHz
- Lost cost
- High reliability
- 2 years warranty

## SPECIFICATION

MODEL	ASD15H-12D5		ASD15H-12D12		ASD15H-12D15		ASD15H-48D5		ASD15H-48D12		ASD15H-48D15		
OUTPUT	DC VOLTAGE	5V	-5V	12V	-12V	15V	-15V	5V	-5V	12V	-12V	15V	-15V
	RATED CURRENT	1.5A	1.5A	0.62A	0.62A	0.5A	0.5A	1.5A	1.5A	0.62A	0.62A	0.5A	0.5A
	CURRENT RANGE	0.07 ~ 1.5A	0.07 ~ 1.5A	0.03 ~ 0.62A	0.03 ~ 0.62A	0.02 ~ 0.5A	0.02 ~ 0.5A	0.07 ~ 1.5A	0.07 ~ 1.5A	0.03 ~ 0.62A	0.03 ~ 0.62A	0.02 ~ 0.5A	0.02 ~ 0.5A
	RATED POWER	15W											
	RIPPLE & NOISE (max.) Note.2	100mVp-p(25% ~ 100% load)											
	VOLTAGE TOLERANCE Note.3	±2.0%											
	LINE REGULATION	±1.0% at 10% ~ 100% load											
	LOAD REGULATION	±1.0% at 10% ~ 100% load											
INPUT	RATED DC INPUT	12VDC						48VDC					
	VOLTAGE RANGE	9.2 ~ 36VDC(50V surge 10ms)						18 ~ 72VDC(100V surge 10ms)					
	EFFICIENCY (Typ.)	76%		80%		80%		80%		83%		83%	
	DC CURRENT	1.8A/12VDC						0.4A/48VDC					
	SHUTDOWN IDLE CURRENT	15mA											
PROTECTION	OVER LOAD	Above 105% rated output power Protection type : Over power limiting, recovers automatically after fault condition is removed											
	OVER VOLTAGE(CLAMP)	7.25 ~ 9V	-7.25 ~ -9V	13.8 ~ 18V	-13.8 ~ -18V	17.3 ~ 22.5V	-17.3 ~ -22.5V	7.25 ~ 9V	-7.25 ~ -9V	13.8 ~ 18V	-13.8 ~ -18V	17.3 ~ 22.5V	-17.3 ~ -22.5V
	SHORT CIRCUIT Note.4	Recovers automatically after fault condition is removed											
FUNCTION	ON/OFF CONTROL	Logic "1" OPEN: ON, logic "0" GND: OFF											
ENVIRONMENT	WORKING TEMP.	-25 ~ +71°C											
	WORKING HUMIDITY	0% ~ 95% RH max. Heatsink temp. 110°C											
	STORAGE TEMP., HUMIDITY	-40 ~ +125°C, 0 ~ 95% RH											
	TEMP. COEFFICIENT	±0.03%/°C (0~50°C)											
SAFETY & EMC	SAFETY STANDARDS	Design refer to UL1950, TUV EN60950											
	ISOLATION VOLTAGE	I/P-O/P: 0.5KVDC for ASD15H-12D series 1.5KVDC for ASD15H-48D series											
	ISOLATION RESISTANCE	I/P-O/P: 100M Ohms/500VDC											
	EMI CONDUCTION & RADIATION	Compliance to FCC Part15 J											
OTHERS	MTBF	438K hrs min. MIL-HDBK-217F (25°C)											
	DIMENSION	38.1*50.8*9.52mm (1.5**2**0.375") (L*W*H)											
	PACKING	0.03Kg; 180pcs/6.4Kg/0.97CUFT											
NOTE	1. All parameters NOT specially mentioned are measured at 12,48VDC input, rated load and 25°C of ambient temperature. 2. Ripple & noise are measured at 20MHz of bandwidth by using a 12" twisted pair-wire terminated with a 0.1uf & 47uf parallel capacitor. 3. Tolerance : includes set up tolerance, line regulation and load regulation. 4. Short circuit not more than 30 second.												

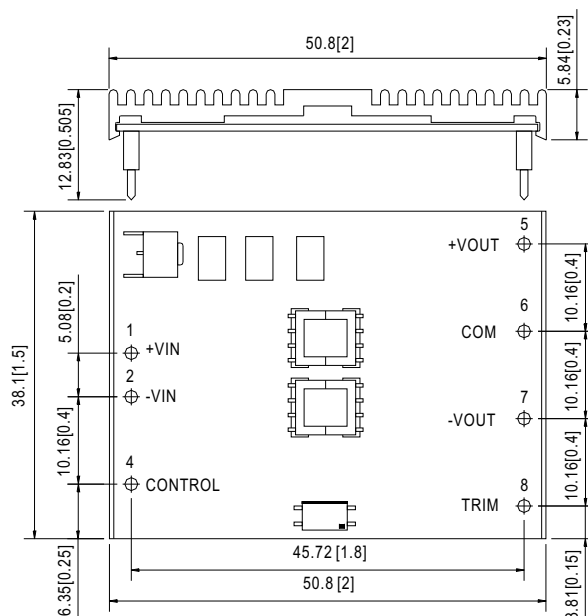


# 15W DC-DC Regulated Dual Output

# ASD15H-D series

## Mechanical Specification

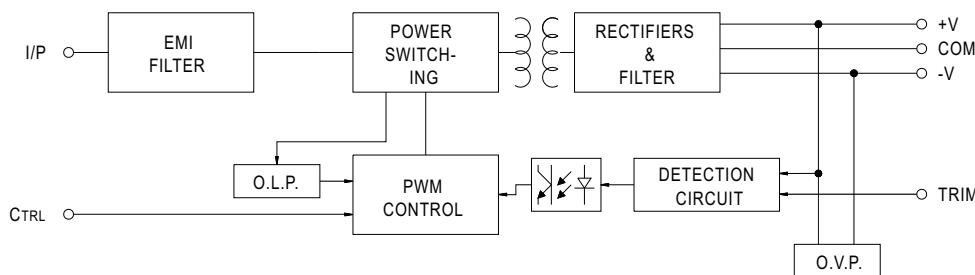
Unit:mm[inch]



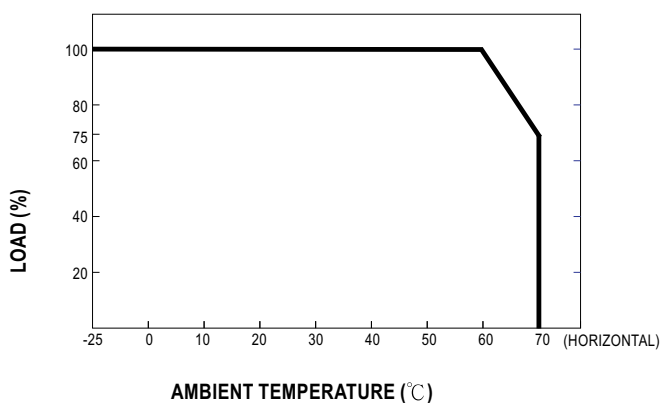
Pin. No Assignment

Pin No.	Assignment	Pin No.	Assignment
1	+VIN	5	+VOUT
2	-VIN	6	COMMON
3	No Pin	7	-VOUT
4	CONTROL	8	TRIM

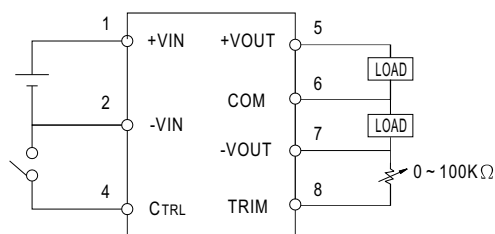
## Block Diagram



## Derating Curve



## ON/OFF Control & Output Trim



- CONTROL INPUT.....PIN4
- CONTROL COMMON.....PIN2
- LOGIC COMPATIBILITY.....CMOS OR OPEN COLLECTOR TTL
- CONTROL VOLTAGE
- ON.....+5.5VDC min OR OPEN CIRCUIT
- OFF.....+2.5VDC max. OR SHORT TO PIN2