

## Technische Information / Technical Information

eupec

Dioden-Modul mit Chopper-IGBT  
Diode Module with Chopper-IGBT

DD B6U 104 N 16 RR

N



B6

## Elektrische Eigenschaften / Electrical properties

Höchstzulässige Werte / Maximum rated values

Gleichrichterdiode / Rectifierdiode				
Periodische Spitzensperrspannung repetitive peak reverse voltage	$T_{vj} = -40^{\circ}\text{C} \dots T_{vj\text{max}}$	$V_{RRM}$	1600	V
Durchlaßstrom-Grenzeffektivwert (pro Element) RMS forward current (per chip)		$I_{FRMSM}$	60	A
Ausgangsstrom output current	$T_C = 100^{\circ}\text{C}$	$I_d$	105	A
Stoßstrom-Grenzwert surge forward current	$T_{vj} = 25^{\circ}\text{C}, t_p = 10\text{ms}$ $T_{vj} = T_{vj\text{max}}, t_p = 10\text{ms}$	$I_{FSM}$	650	A
			550	A
Grenzlastintegral $I^2t$ -value	$T_{vj} = 25^{\circ}\text{C}, t_p = 10\text{ms}$ $T_{vj} = T_{vj\text{max}}, t_p = 10\text{ms}$	$I^2t$	2100	$\text{A}^2\text{s}$
			1500	$\text{A}^2\text{s}$
IGBT				
Kollektor-Emitter-Sperrspannung collector-emitter voltage		$V_{CES}$	1200	V
Kollektor-Dauergleichstrom DC-collector current	$T_C = 80^{\circ}\text{C}$	$I_C$	50	A
Periodischer Kollektor-Spitzenstrom repetitive peak collector current	$t_p = 1\text{ms}$	$I_{CRM}$	100	A
Gesamt-Verlustleistung total power dissipation	$T_C = 25^{\circ}\text{C}$	$P_{tot}$	350	W
Gate-Emitter Spitzenspannung gate-emitter peak voltage		$V_{GE}$	$\pm 20$	V
Schnelle Diode / Fast diode				
Periodische Spitzensperrspannung repetitive peak reverse voltage		$V_{RRM}$	1200	V
Dauergleichstrom DC forward current	$T_C = 80^{\circ}\text{C}$	$I_F$	25	A
Periodischer Spitzenstrom repetitive peak forward current	$t_p = 1\text{ms}$	$I_{FRM}$	50	A
Modul				
Isolations-Prüfspannung insulation test voltage	RMS, $f = 50\text{Hz}$ , $t = 1\text{min}$ NTC connected to baseplate	$V_{ISOL}$	2,5	kV

Charakteristische Werte / Characteristic values

Gleichrichterdiode / Rectifierdiode			min.	typ.	max.	
Durchlaßspannung forward voltage	$T_{vj} = T_{vj\text{max}}, I_F = 100\text{A}$	$V_F$			1,30	V
Schleusenspannung threshold voltage	$T_{vj} = T_{vj\text{max}}$	$V_{(TO)}$			0,75	V
Ersatzwiderstand forward slope resistance	$T_{vj} = T_{vj\text{max}}$	$r_T$			5,5	$\text{m}\Omega$
Sperrstrom reverse current	$T_{vj} = T_{vj\text{max}}, V_R = V_{RRM}$	$I_R$			5	mA
Modul Leitungswiderstand, Anschlüsse-Chip lead resistance, terminals-chip	$T_C = 25^{\circ}\text{C}$	$R_{AA'+KK'}$			1	$\text{m}\Omega$

prepared by: Ralf Jörke

date of publication: 13.12.2000

approved by: Lothar Kleber

revision: 1

## Technische Information / Technical Information

eupec

Dioden-Modul mit Chopper-IGBT  
Diode Module with Chopper-IGBT

DD B6U 104 N 16 RR

N



B6

## Elektrische Eigenschaften / Electrical properties

Charakteristische Werte / Characteristic values

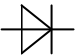
IGBT			min.	typ.	max.	
Kollektor-Emitter Sättigungsspannung collector-emitter saturation voltage	$T_{vj} = 25^{\circ}\text{C}, i_c = 50\text{A}, v_{GE} = 15\text{V}$ $T_{vj} = 125^{\circ}\text{C}, i_c = 50\text{A}, v_{GE} = 15\text{V}$	$V_{CE\text{ sat}}$		2,10 2,5	2,80	V
Gate-Emitter-Schwelspannung gate-emitter threshold voltage	$T_{vj} = 25^{\circ}\text{C}, i_c = 2\text{mA}, v_{GE} = v_{CE}$	$V_{GE(TO)}$	4,5	5,5	6,5	V
Eingangskapazität input capacitance	$T_{vj} = 25^{\circ}\text{C}, f_0 = 1\text{MHz},$ $v_{CE} = 25\text{V}, v_{GE} = 0\text{V}$	$C_{ies}$		3,3		nF
Kollektor-Emitter Reststrom collector-emitter cut-off current	$T_{vj} = 25^{\circ}\text{C}, v_{CE} = 1200\text{V}, v_{GE} = 0\text{V}$ $T_{vj} = 125^{\circ}\text{C}, v_{CE} = 1200\text{V}, v_{GE} = 0\text{V}$	$i_{CES}$		0,8 4,0	1	mA
Gate-Emitter Reststrom gate leakage current	$T_{vj} = 25^{\circ}\text{C}, v_{CE} = 0\text{V}, v_{GE} = 20\text{V}$	$i_{GES}$			500	nA
Emitter-Gate Reststrom gate-leakage current	$T_{vj} = 25^{\circ}\text{C}, v_{CE} = 0\text{V}, v_{EG} = 20\text{V}$	$i_{EGS}$			500	nA
<b>Schnelle Diode / Fast diode</b>						
Durchlaßspannung forward voltage	$T_{vj} = 25^{\circ}\text{C}, i_F = 25\text{A}$ $T_{vj} = 125^{\circ}\text{C}, i_F = 25\text{A}$	$V_F$		1,7 1,6	2,20	V
Sperrverzögerungsladung recovered charge	$i_{FM} = 25\text{A}, -di/dt = 800\text{A}/\mu\text{s}, v_R = 600\text{V}$ $T_{vj} = 25^{\circ}\text{C}$ $T_{vj} = 125^{\circ}\text{C}$	$Q_r$		2,3 6,0		$\mu\text{As}$ $\mu\text{As}$

## Thermische Eigenschaften / Thermal properties

Innerer Wärmewiderstand	Gleichrichter / Rectifier, $\Theta = 120^{\circ}\text{rect}$	$R_{thJC}$	max.	1,08	$^{\circ}\text{C/W}$
	Transistor / Transistor, DC		max.	0,38	$^{\circ}\text{C/W}$
	Schnelle Diode / Fast diode, DC		max.	1,00	$^{\circ}\text{C/W}$
Übergangs-Wärmewiderstand thermal resistance, case to heatsink	Gleichrichter / Rectifier	$R_{thCK}$	max.	0,25	$^{\circ}\text{C/W}$
	Transistor / Transistor		max.	0,24	$^{\circ}\text{C/W}$
	Schnelle Diode / Fast diode		max.	0,30	$^{\circ}\text{C/W}$
Höchstzulässige Sperrschichttemperatur max. junction temperature		$T_{vj\text{ max}}$		150	$^{\circ}\text{C}$
Betriebstemperatur operating temperature		$T_{c\text{ op}}$		- 40...+150	$^{\circ}\text{C}$
Lagertemperatur storage temperature		$T_{stg}$		- 40...+150	$^{\circ}\text{C}$

# Technische Information / Technical Information **eupec**

**Dioden-Modul mit Chopper-IGBT**  
**Diode Module with Chopper-IGBT** **DD B6U 104 N 16 RR**

**N**  **B6**

## Mechanische Eigenschaften / Mechanical properties

Gehäuse, siehe Anlage case, see appendix			Seite 4 page 4	
Innere Isolation internal insulation			Al <sub>2</sub> O <sub>3</sub>	
CTI comperative tracking index			225	V
Anzugsdrehmoment für mechanische Befestigung mounting torque	Toleranz / tolerance ±15%	M1	4	Nm
Gewicht weight		G	typ. 185	g
Kriechstrecke creepage distance			12,5	mm
Schwingfestigkeit vibration resistance	f = 50Hz		50	m/s <sup>2</sup>

## Temperatursensor / Temperature sensor

Nennwiderstand rated resistance	T <sub>C</sub> = 25°C R <sub>100</sub> = 493Ω ± 5%	R <sub>25</sub>	5	kW
Verlustleistung power dissipation	T <sub>C</sub> = 25°C	P <sub>25</sub>	max. 20	mW
B-Wert B-value	R <sub>2</sub> = R <sub>1</sub> exp [B(1/T <sub>1</sub> - 1/T <sub>2</sub> )]	B <sub>25/50</sub>	3375	K

Mit dieser technischen Information werden Halbleiterbauelemente spezifiziert, jedoch keine Eigenschaften zugesichert. Sie gilt in Verbindung mit den zugehörigen Technischen Erläuterungen. / This technical information specifies semiconductor devices but promises no characteristics. It is valid in combination with the belonging technical notes.

# Technische Information / Technical Information

**eupec**

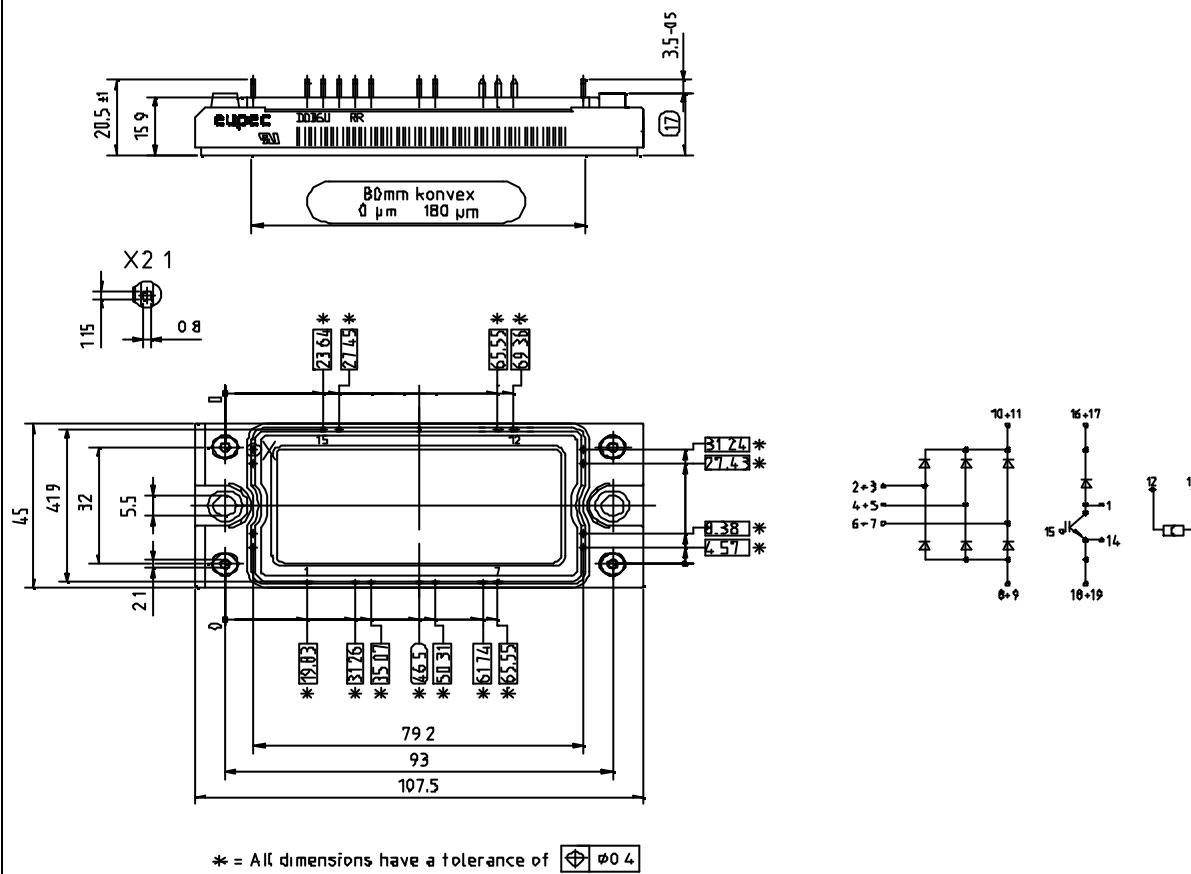
Dioden-Modul mit Chopper-IGBT  
Diode Module with Chopper-IGBT

**DD B6U 104 N 16 RR**

N



B6



# Technische Information / Technical Information **eupec**

Dioden-Modul mit Chopper-IGBT  
Diode Module with Chopper-IGBT

**DD B6U 104 N 16 RR**

N



B6

Analytische Elemente des transienten Wärmewiderstandes  $Z_{thJC}$  für DC, Netz-Diode

Analytical elements of transient thermal impedance  $Z_{thJC}$  for DC, rectifier diode

Pos. n	1	2	3	4	5	6	7
$R_{thn} [^{\circ}C / W]$	0,4063	0,3034	0,0497	0,0309			
$\tau_n [s]$	0,0300	0,0190	0,0140	0,0003			

*Analytische Funktion:*

$$Z_{thJC} = \sum_{n=1}^{n_{max}} R_{thn} \left( 1 - e^{-\frac{t}{\tau_n}} \right)$$

# Technische Information / Technical Information



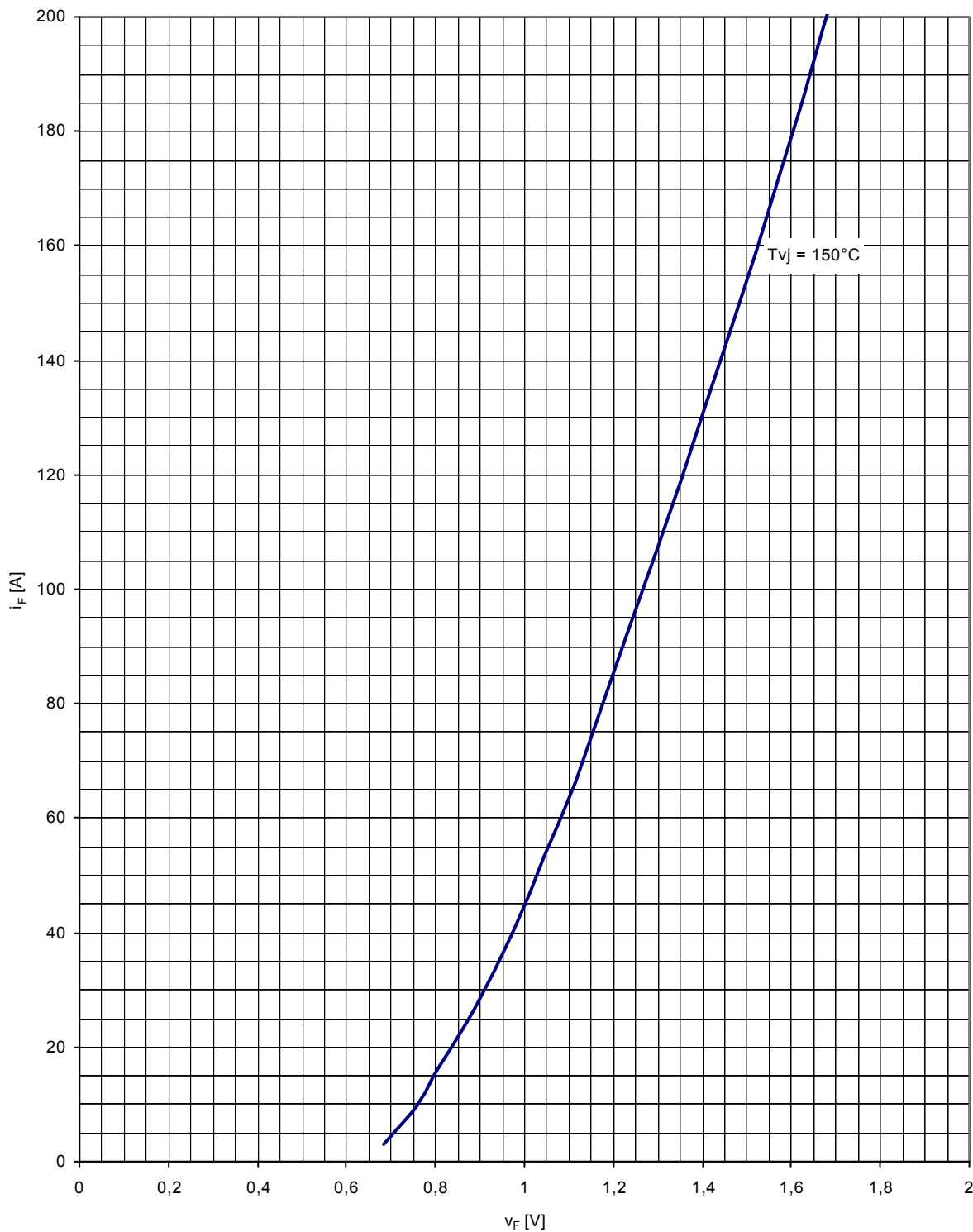
Dioden-Modul mit Chopper-IGBT  
Diode Module with Chopper-IGBT

**DD B6U 104 N 16 RR**

N



B6



Grenzdurchlaßkennlinie / Limiting on-state characteristic  $i_F = f(v_F)$

## Technische Information / Technical Information

eupec

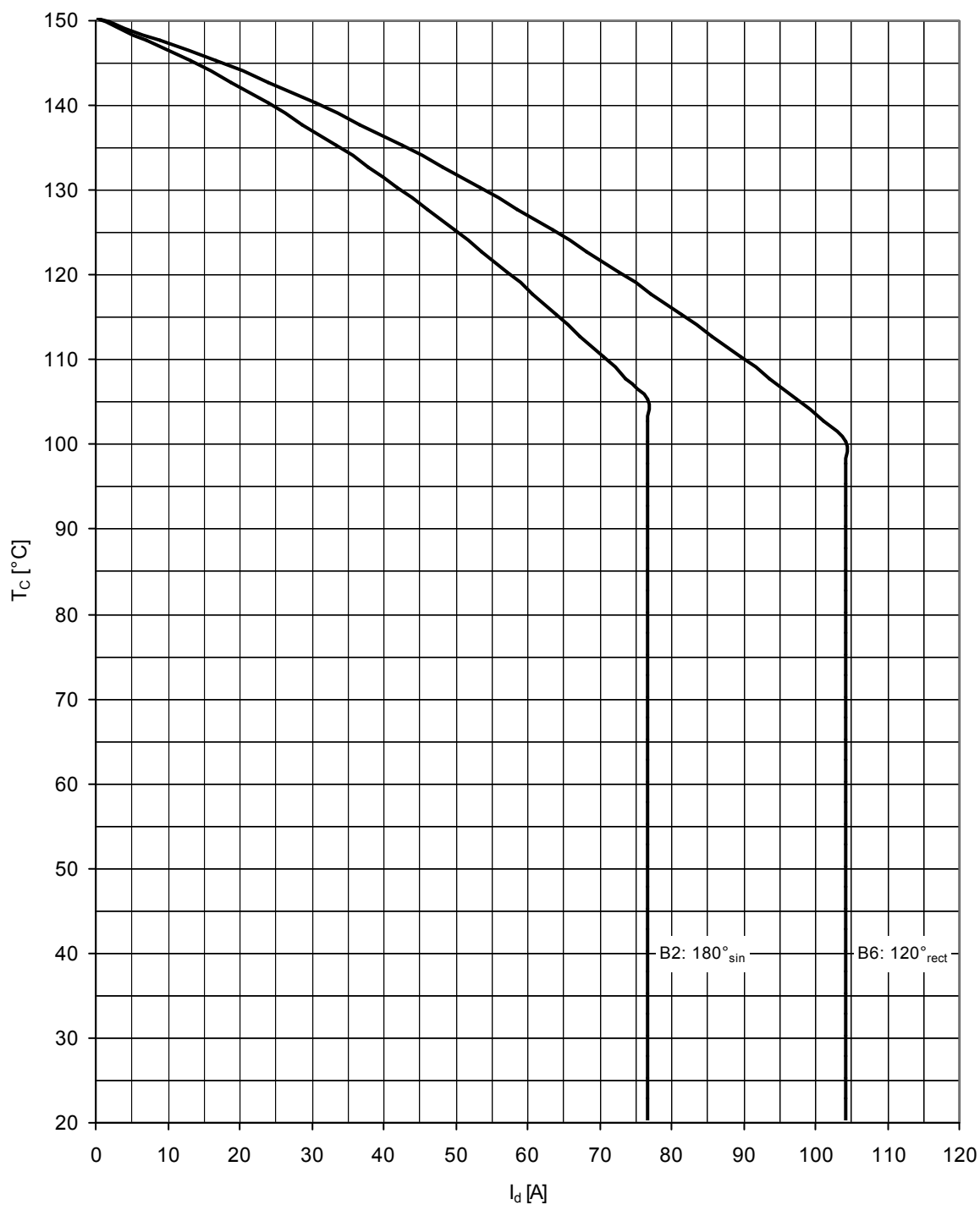
Dioden-Modul mit Chopper-IGBT  
Diode Module with Chopper-IGBT

DD B6U 104 N 16 RR

N



B6



Höchstzulässige Gehäusetemperatur / Maximum allowable case temperatur  $T_c = f(I_d)$   
 Parameter: Stromrichterschaltung / converter circuit

## Technische Information / Technical Information

eupec

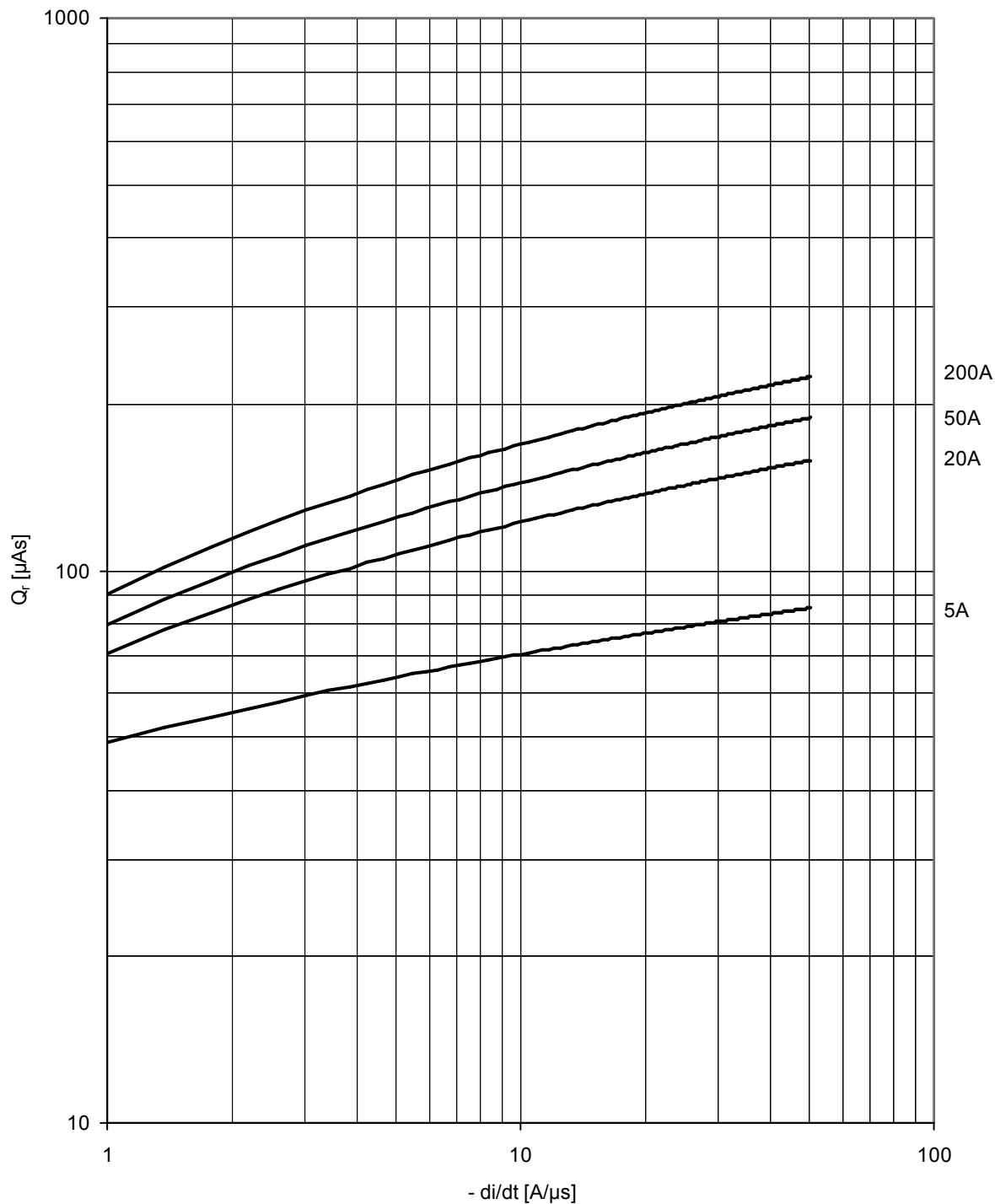
Dioden-Modul mit Chopper-IGBT  
Diode Module with Chopper-IGBT

DD B6U 104 N 16 RR

N



B6

Sperrverzögerungsladung / Recovered charge  $Q_r = f(-di/dt)$  $T_{vj} = T_{vjmax}; V_R = 0,5V_{RRM}; V_{RM} = 0,8V_{RRM}$ Parameter: Durchlaßstrom / On-state current  $i_{FM}$



## Technische Information / Technical Information

eupec

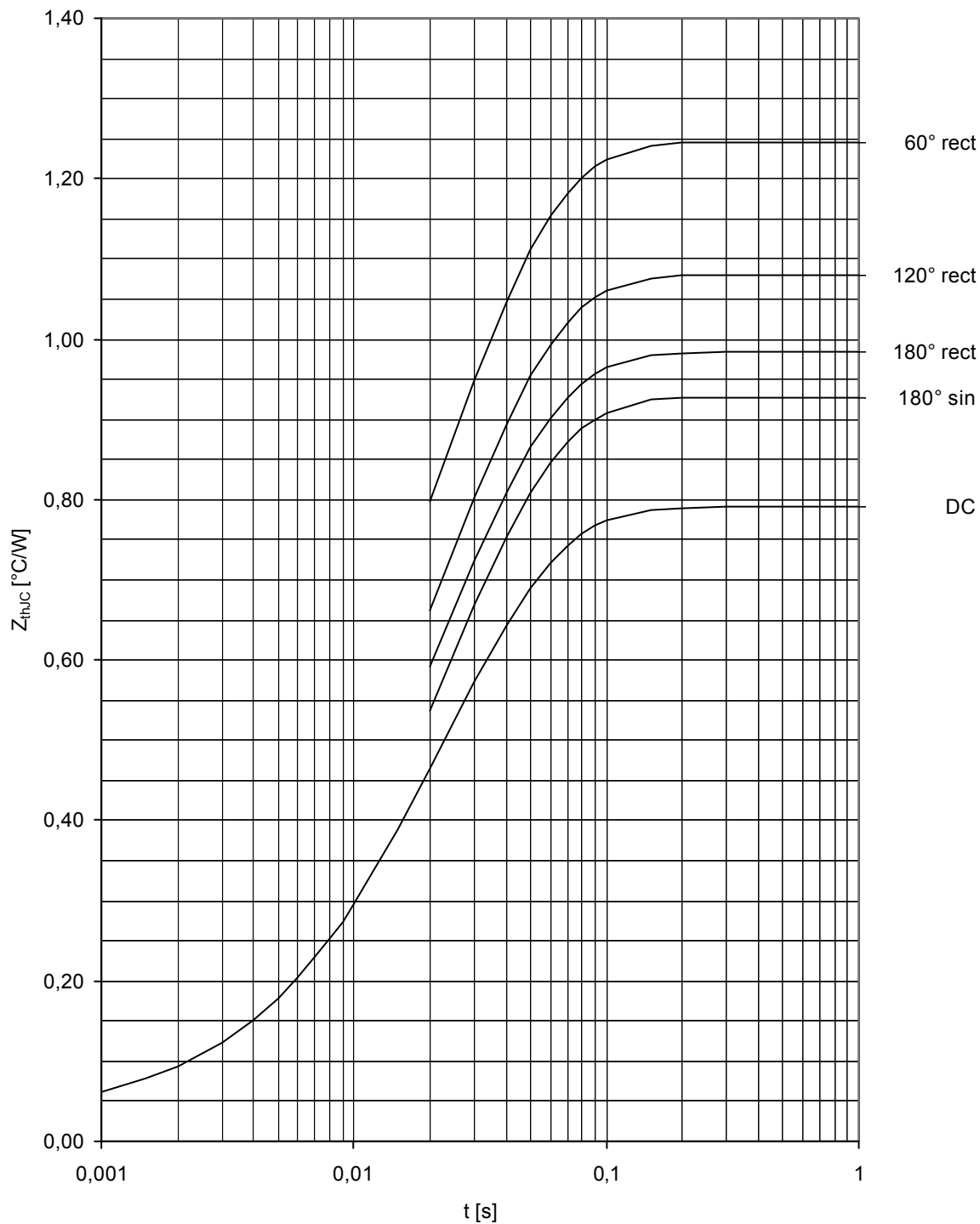
Dioden-Modul mit Chopper-IGBT  
Diode Module with Chopper-IGBT

DD B6U 104 N 16 RR

N



B6



Transienter innerer Wärmewiderstand Gleichrichter / Transient thermal impedance converter  $Z_{thJC} = f(t)$   
 Parameter: Stromflußwinkel / Current conduction angle  $Q$

## Technische Information / Technical Information

eupec

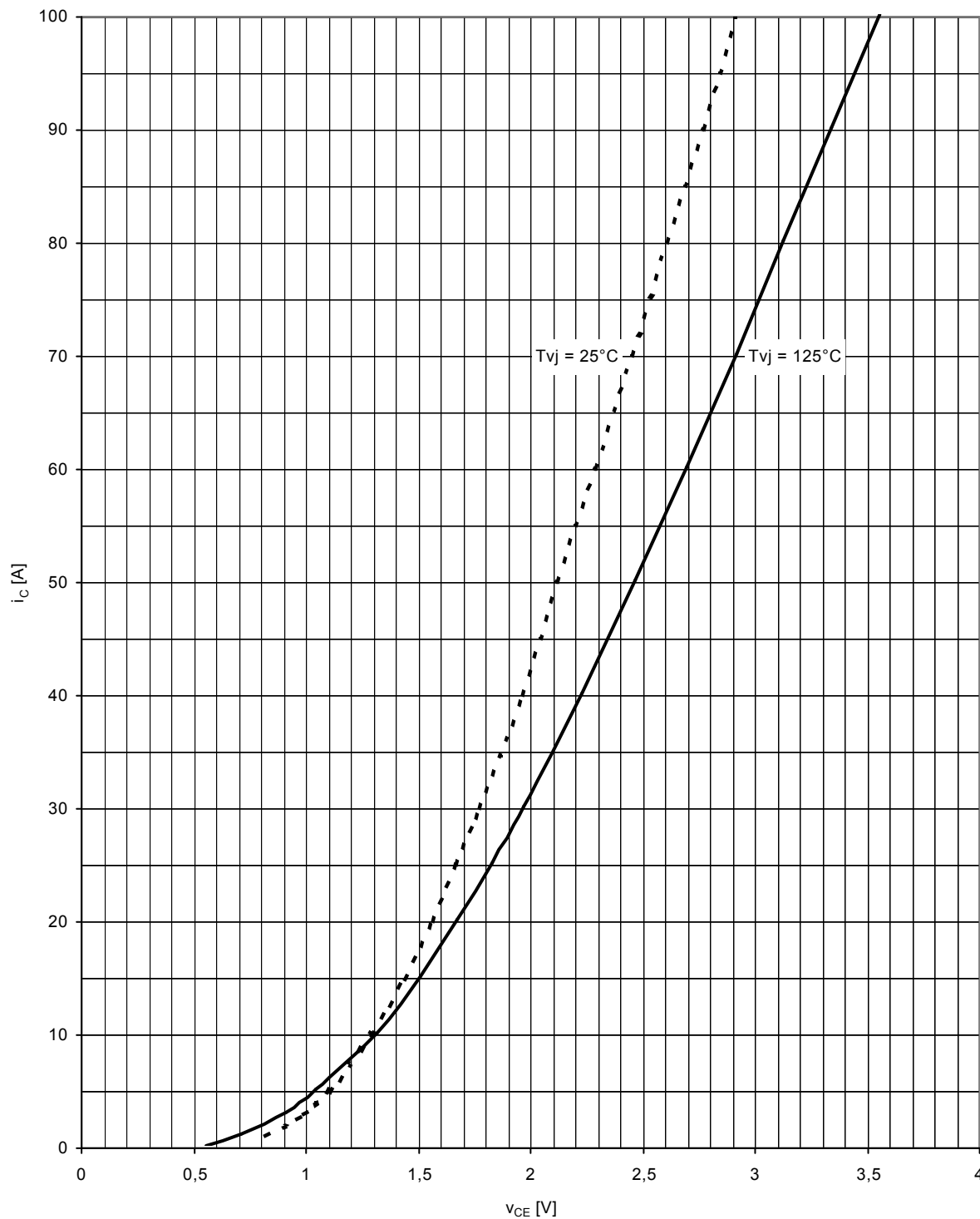
Dioden-Modul mit Chopper-IGBT  
Diode Module with Chopper-IGBT

DD B6U 104 N 16 RR

N



B6



Ausgangskennlinienfeld Brems-Chopper-IGBT (typisch) / Output characteristic brake-chopper-IGBT (typical)

 $i_C = f(v_{CE})$ ,  $v_{GE} = 15\text{V}$

## Technische Information / Technical Information

eupec

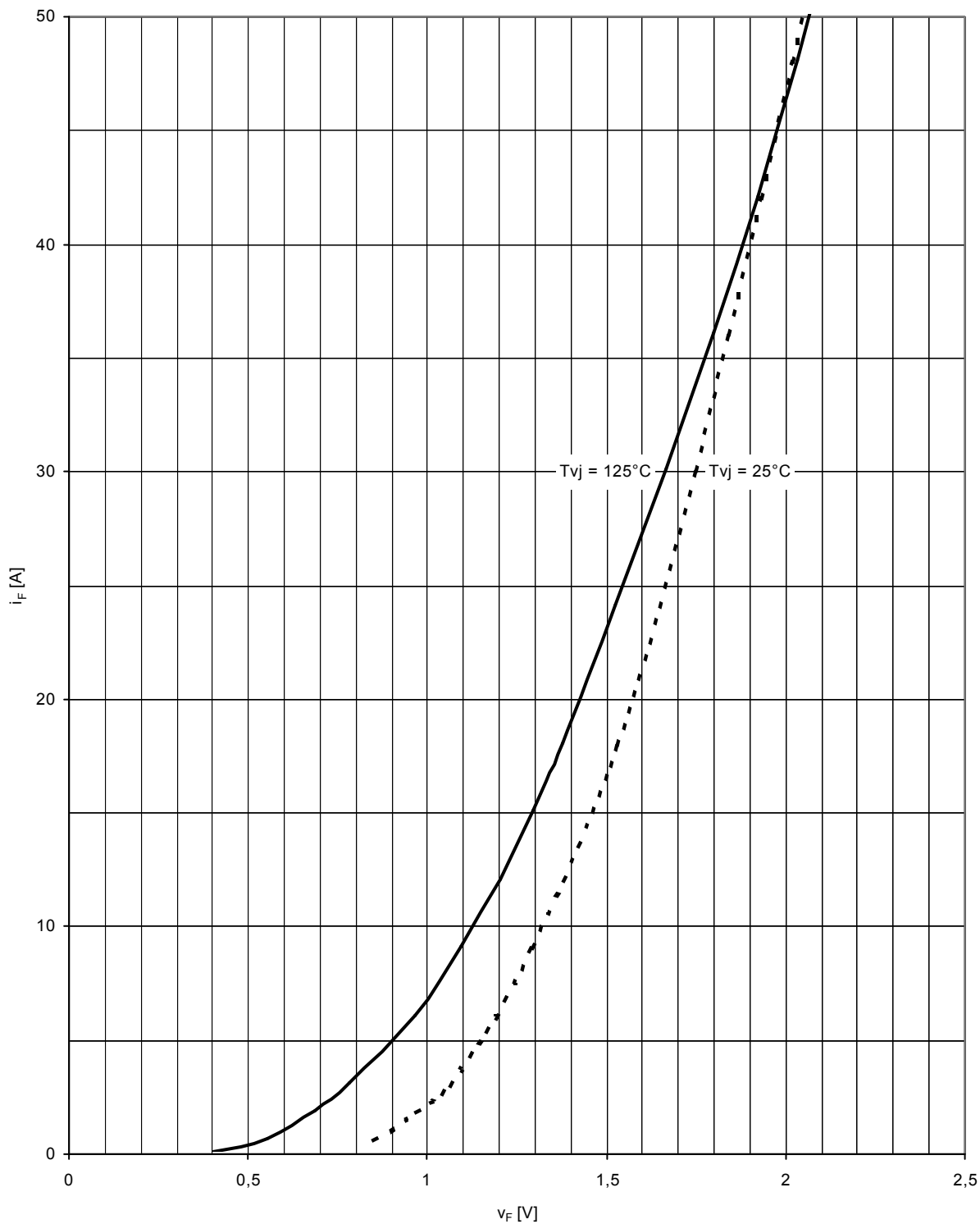
Dioden-Modul mit Chopper-IGBT  
Diode Module with Chopper-IGBT

DD B6U 104 N 16 RR

N



B6



Durchlaßkennlinie der Brems-Chopper-Diode (typisch) / On-state characteristic of brake-chopper-FWD (typical)  
 $i_F = f(v_F)$

## Technische Information / Technical Information

eupec

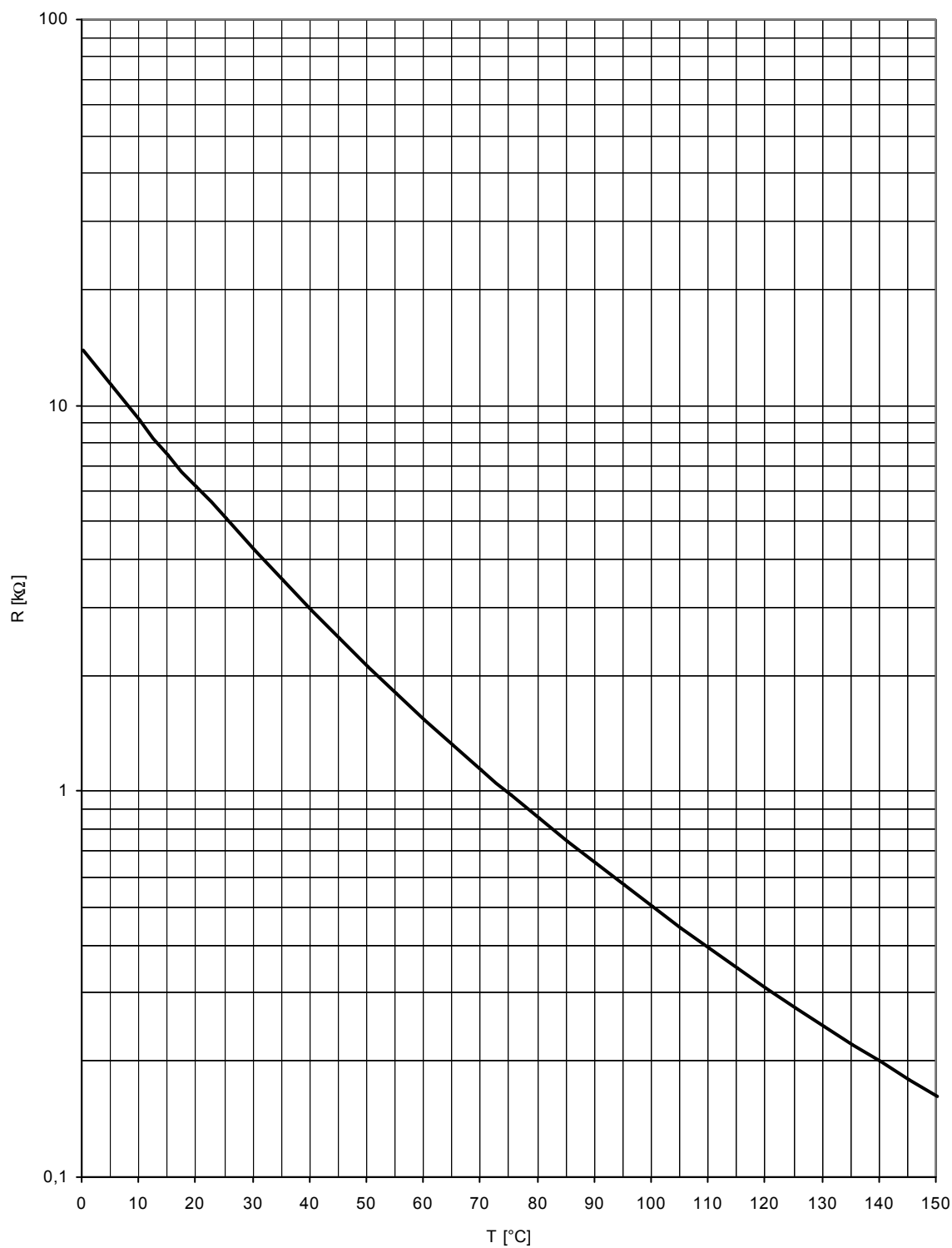
Dioden-Modul mit Chopper-IGBT  
Diode Module with Chopper-IGBT

DD B6U 104 N 16 RR

N



B6

NTC-Temperaturkennlinie (typisch) / NTC-temperature characteristic (typical)  $R = f(T)$

## Terms & Conditions of Usage

### Attention

The present product data is exclusively subscribed to technically experienced staff. This Data Sheet is describing the specification of the products for which a warranty is granted exclusively pursuant the terms and conditions of the supply agreement. There will be no guarantee of any kind for the product and its specifications. Changes to the Data Sheet are reserved.

You and your technical departments will have to evaluate the suitability of the product for the intended application and the completeness of the product data with respect to such application. Should you require product information in excess of the data given in the Data Sheet, please contact your local Sales Office via "www.eupec.com / sales & contact".

### Warning

Due to technical requirements the products may contain dangerous substances. For information on the types in question please contact your local Sales Office via "www.eupec.com / sales & contact".