

 POSEICO POSEICO SPA POver SEMiconductors Italian COporation	POSEICO S.p.A. Via N. Lorenzi 8, 16152 Genova - ITALY Tel. +39 010 6556234 - Fax +39 010 6557519 Sales Office: Tel. +39 010 6556775 - Fax +39 010 6442510
---	---

PHASE CONTROL MODULE**ATT571**

- *Full ermetic packaging
- *Industrial compatible packaging
- *Insulation using Aln substrate
- *New G-K auxiliary output arrangement
- *Contact screws available on request

Repetitive voltage up to	1600 V
Mean on-state current	570 A
Surge current	14.5 kA

FINAL SPECIFICATION

mar 01 - ISSUE : 01

Symbol	Characteristic	Conditions	T _j [°C]	Value	Unit
BLOCKING					
V _{RRM / DRM}	Repetitive peak reverse/off-state voltage		135	1600	V
V _{RSM}	Non-repetitive peak reverse voltage		135	1700	V
I _{RRM / DRM}	Repetitive peak reverse/off-state current		135	50	mA
CONDUCTING					
I _{T (AV)}	Mean on-state current	180° sin, 50Hz, T _c =91°C		570	A
I _{T (AV)}	Mean on-state current	180° sin, 50Hz, T _c =55°C		875	A
I _{TSM}	Surge on-state current	sine wave, 10 ms	135	14.5	kA
I ² t	I ² t	without reverse voltage		1051 x1E3	A ² s
V _T	On-state voltage	On-state current = 1600 A	25	1.63	V
V _{T(TO)}	Threshold voltage		135	1.0	V
r _T	On-state slope resistance		135	0.380	mohm
SWITCHING					
di/dt	Critical rate of rise of on-state current, min.	From 75% V _{DRM} up to 1050 A, gate 10V 5ohm	135	200	A/μs
dv/dt	Critical rate of rise of off-state voltage, min.	Linear ramp up to 70% of V _{DRM}	135	500	V/μs
t _d	Gate controlled delay time, typical	V _D =100V, gate source 25V, 10 ohm, t _r =.5 μs	25	1.1	μs
t _q	Circuit commutated turn-off time, typical	dV/dt = 20 V/μs linear up to 75% V _{DRM}		200	μs
Q _{rr}	Reverse recovery charge	di/dt=-20 A/μs, I _e = 700 A	135		μC
I _{rr}	Peak reverse recovery current	V _R = 50 V			A
I _H	Holding current, typical	V _D =5V, gate open circuit	25	300	mA
I _L	Latching current, typical	V _D =5V, t _p =30μs	25	700	mA
GATE					
V _{GT}	Gate trigger voltage	V _D =5V	25	3.5	V
I _{GT}	Gate trigger current	V _D =5V	25	250	mA
V _{GD}	Non-trigger gate voltage, min.	V _D =V _{DRM}	135	0.25	V
V _{FGM}	Peak gate voltage (forward)			30	V
I _{FGM}	Peak gate current			10	A
V _{RGM}	Peak gate voltage (reverse)			5	V
P _{GM}	Peak gate power dissipation	Pulse width 100 μs		150	W
P _G	Average gate power dissipation			2	W
MOUNTING					
R _{th(j-c)}	Thermal impedance	Junction to case, per element		50	°C/kW
R _{th(c-h)}	Thermal impedance	Case to heatsink, per element		20	°C/kW
T _j	Operating junction temperature			-30 / 135	°C
V _{ins}	RMS insulation voltage	50Hz, circuit to base, all terminal shorted	25	4500	V
T	Mounting tourque	Case to heatsink		4 to 6	Nm
		Busbars to terminals		12 to 18	Nm
	Mass			1500	g
ORDERING INFORMATION : ATT571 S 16					
standard specification <input type="checkbox"/> <input type="checkbox"/> VDRM&VRRM/100					

ATT571 PHASE CONTROL MODULE

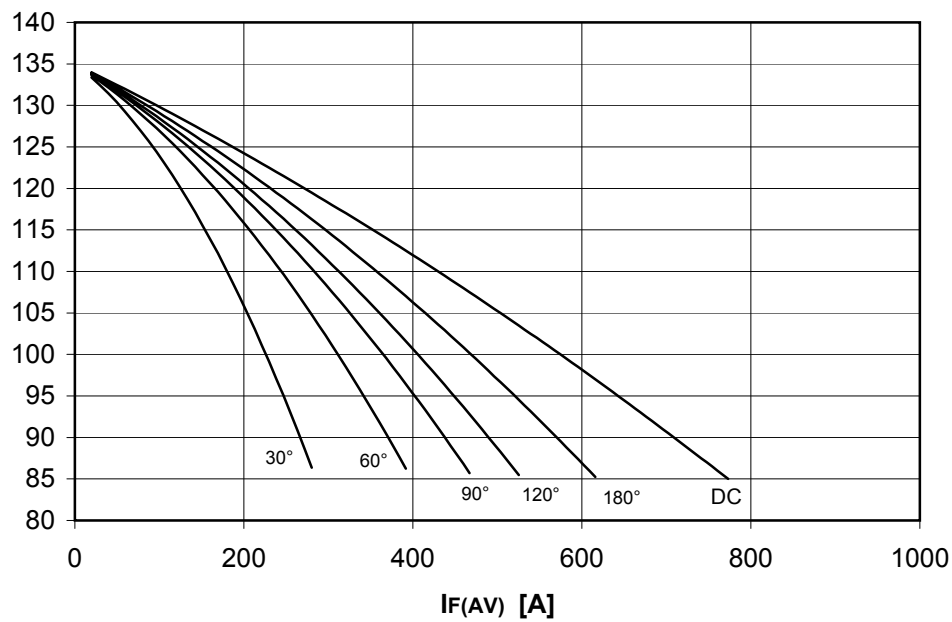


FINAL SPECIFICATION mar 01 - ISSUE : 01

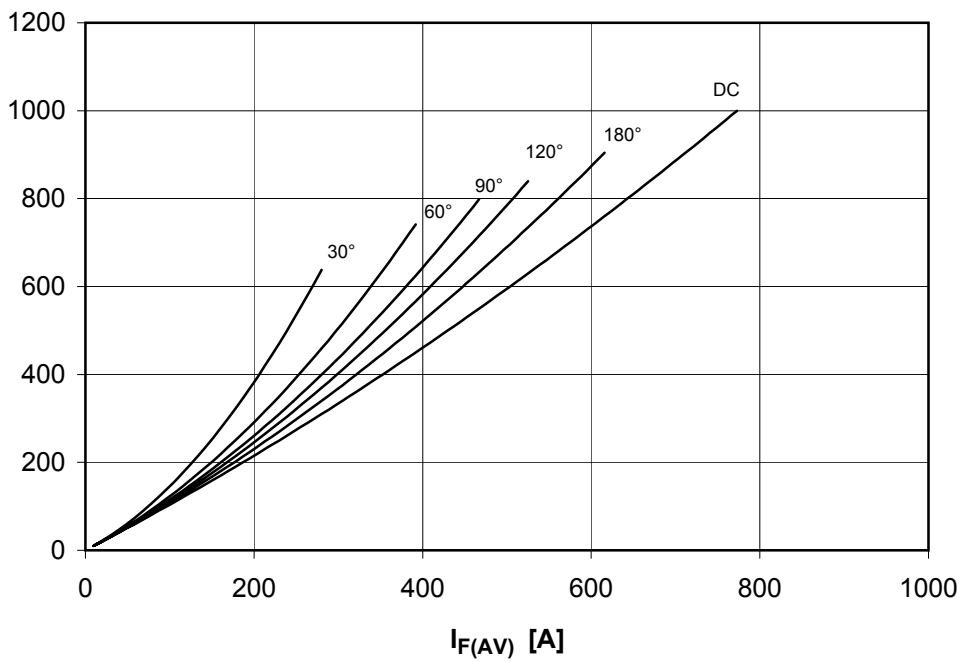
DISSIPATION CHARACTERISTICS

SQUARE WAVE

Tcase [°C]



PF(AV) [W]



ATT571 PHASE CONTROL MODULE

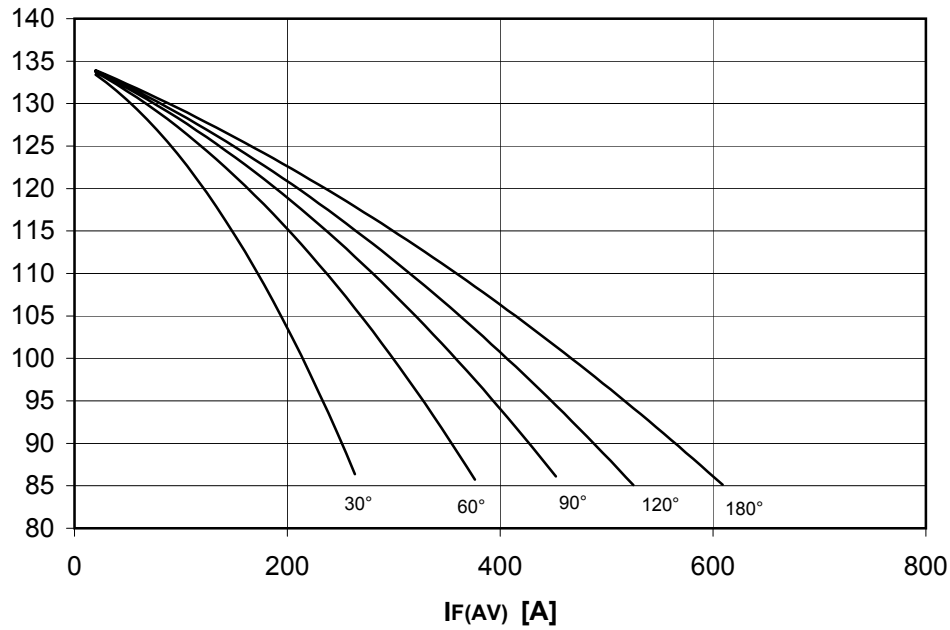


FINAL SPECIFICATION mar 01 - ISSUE : 01

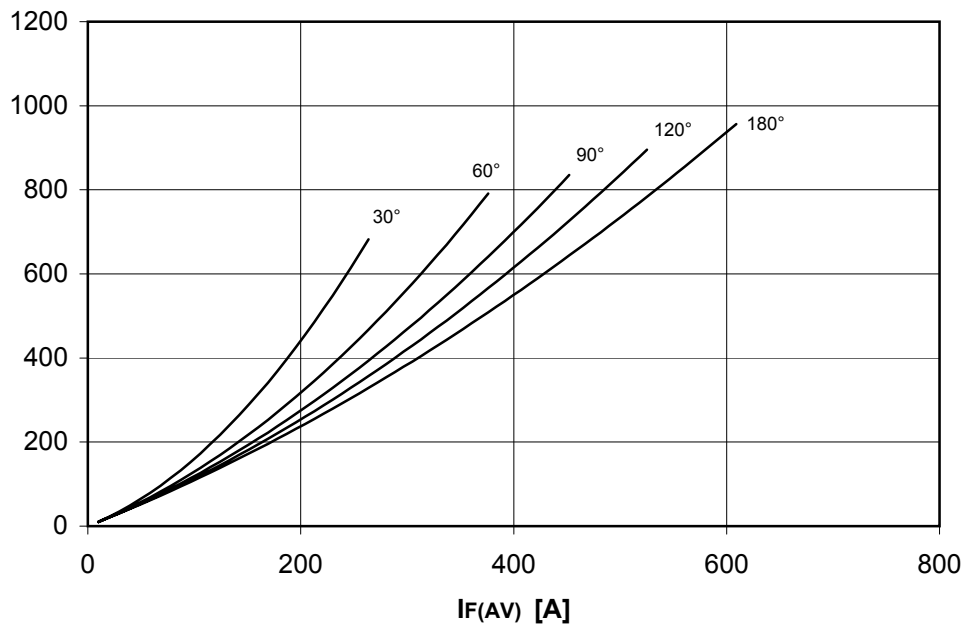
DISSIPATION CHARACTERISTICS

SINE WAVE

T_{case} [°C]



P_{F(AV)} [W]

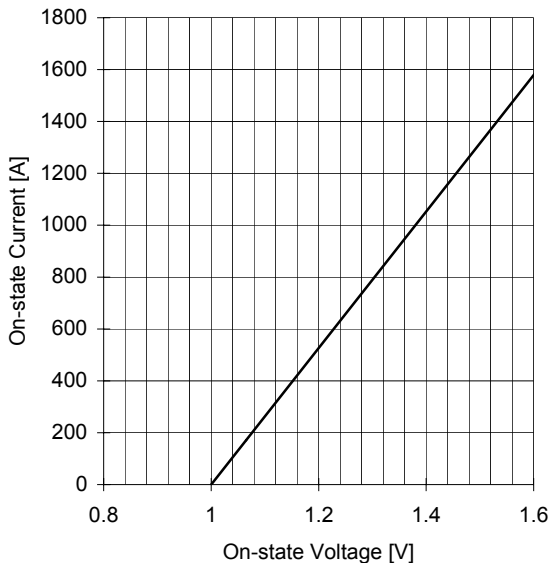


ATT571 PHASE CONTROL MODULE

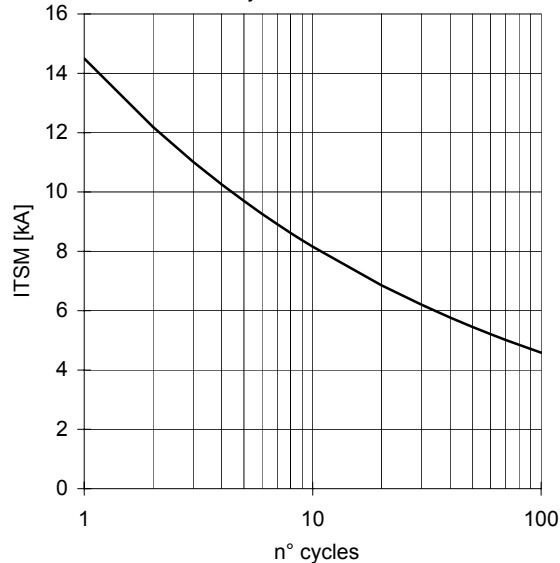


FINAL SPECIFICATION mar 01 - ISSUE : 01

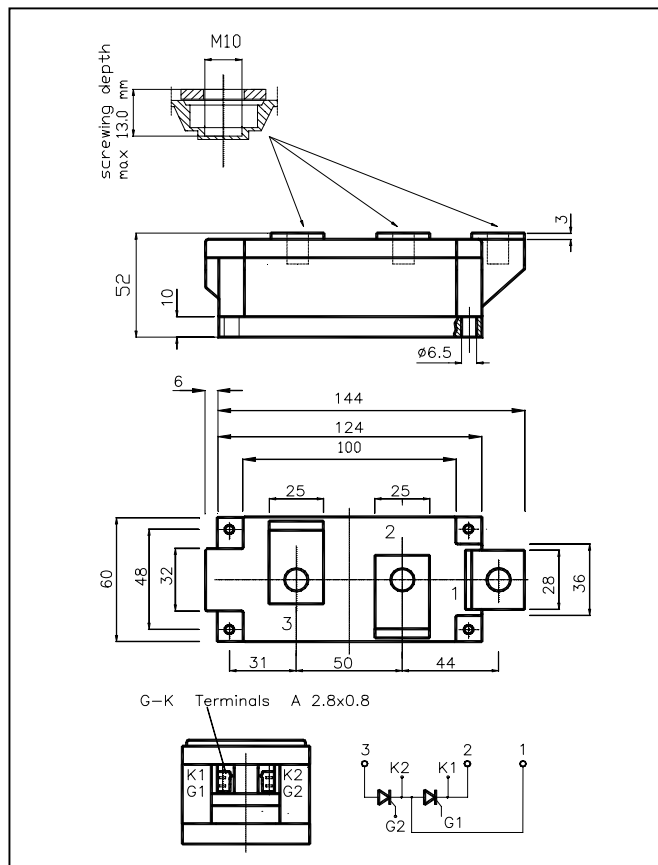
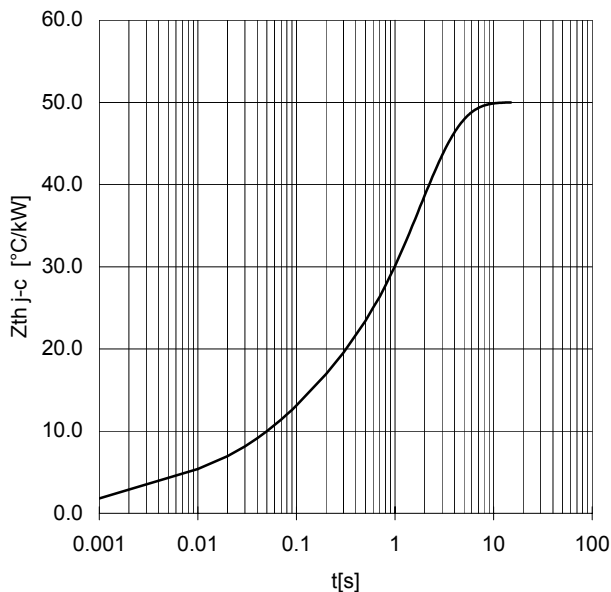
ON-STATE CHARACTERISTIC
T_j = 135 °C



SURGE CHARACTERISTIC
T_j = 135 °C



TRANSIENT THERMAL IMPEDANCE



All the characteristics given in this data sheet are guaranteed only with uniform clamping force, cleaned and lubricated heatsink, surfaces with flatness < .03 mm and roughness < 2 μm.

In the interest of product improvement POSEICO SPA reserves the right to change any data given in this data sheet at any time without previous notice.

If not stated otherwise the maximum value of ratings (symbols over shaded background) and characteristics is reported.

Distributed by

