 <p>POSEICO POSEICO SPA POwer SEmiconductors Italian COrporation</p>	<p>POSEICO SPA Via N. Lorenzi 8, 16152 Genova - ITALY Tel. +39 010 6556234 - Fax +39 010 6557519 Sales Office: Tel. +39 010 6556775 - Fax +39 010 6442510</p>
---	---

RECTIFIER SINGLE DIODES MODULE**ADS1000**

- *Full ermetic packaging
- *Industrial compatible packaging
- *Insulation using AlN substrate
- *Contact screws available on request

Repetitive voltage up to	1000 V
Mean on-state current	950 A
Surge current	23. kA

FINAL SPECIFICATION

mar 01 - ISSUE : 1

Symbol	Characteristic	Conditions	T _j [°C]	Value	Unit
BLOCKING					
V _{RRM}	Repetitive peak reverse voltage		150	1000	V
V _{RSM}	Non-repetitive peak reverse voltage		150	1100	V
I _{RRM}	Repetitive peak reverse current		150	50	mA
CONDUCTING					
I _{F(AV)}	Mean on-state current	180° sin, 50Hz, T _c =100°C		950	A
I _{F(AV)}	Mean on-state current	180° sin, 50Hz, T _c =55°C		1540	A
I _{FSM}	Surge on-state current	sine wave, 10 ms	150	23	kA
I ² t	I ² t	without reverse voltage		2645 x1E3	A ² s
V _F	On-state voltage	On-state current = 1800 A	25	1.1	V
V _{F(TO)}	Threshold voltage		150	0.75	V
r _F	On-state slope resistance		150	0.125	mohm
MOUNTING					
R _{th(j-c)}	Thermal impedance	Junction to case, per element		50	°C/kW
R _{th(c-h)}	Thermal impedance	Case to heatsink, per element		20	°C/kW
T _j	Operating junction temperature			-30 / 150	°C
V _{ins}	RMS insulation voltage	50Hz, circuit to base, all terminal shorted	25	4500	V
T	Mounting tourque	Case to heatsink		4 to 6	Nm
		Busbars to terminals		12 to 18	Nm
	Mass			1500	g
ORDERING INFORMATION : ADS1000 S 10 standard specification —┐┐ VRRM/100					

ORDERING INFORMATION : ADS1000 S 10

standard specification —┐┐ VRRM/100

ADS1000 RECTIFIER SINGLE DIODES MODULE

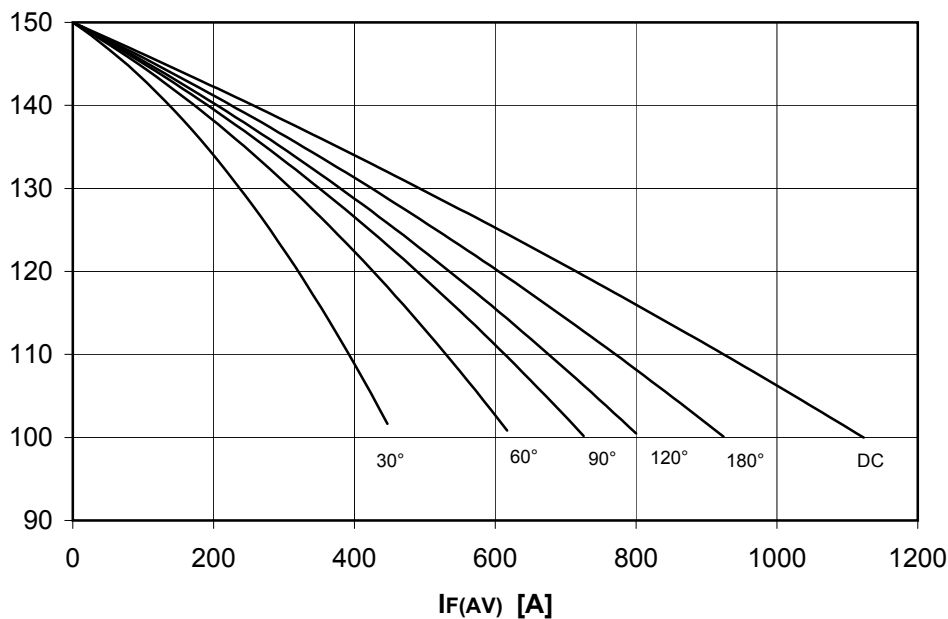


FINAL SPECIFICATION mar 01 - ISSUE : 1

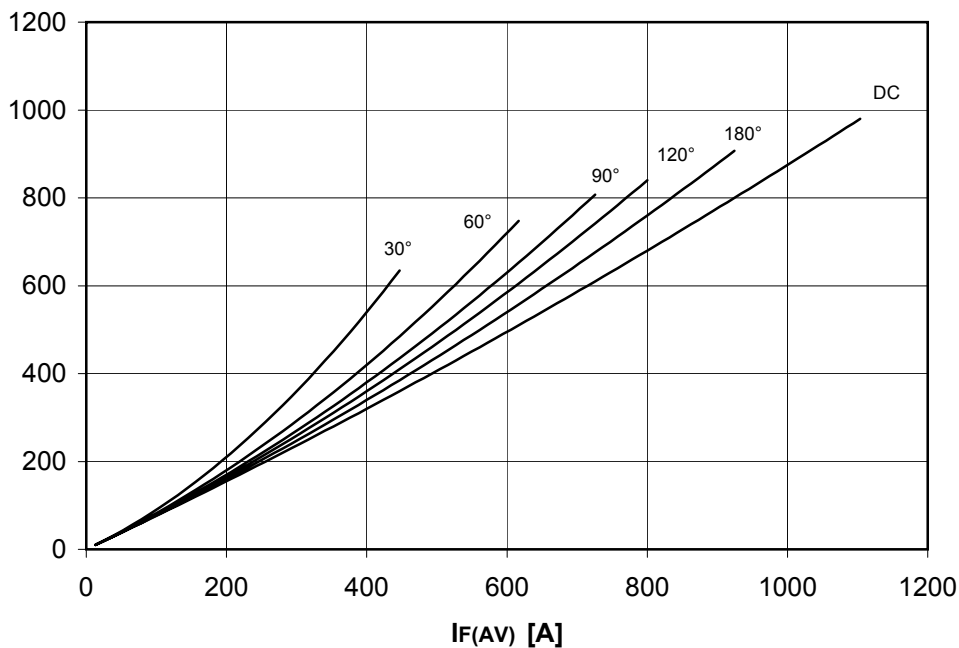
DISSIPATION CHARACTERISTICS

SQUARE WAVE

Tcase [°C]



PF(AV) [W]



ADS1000 RECTIFIER SINGLE DIODES MODULE

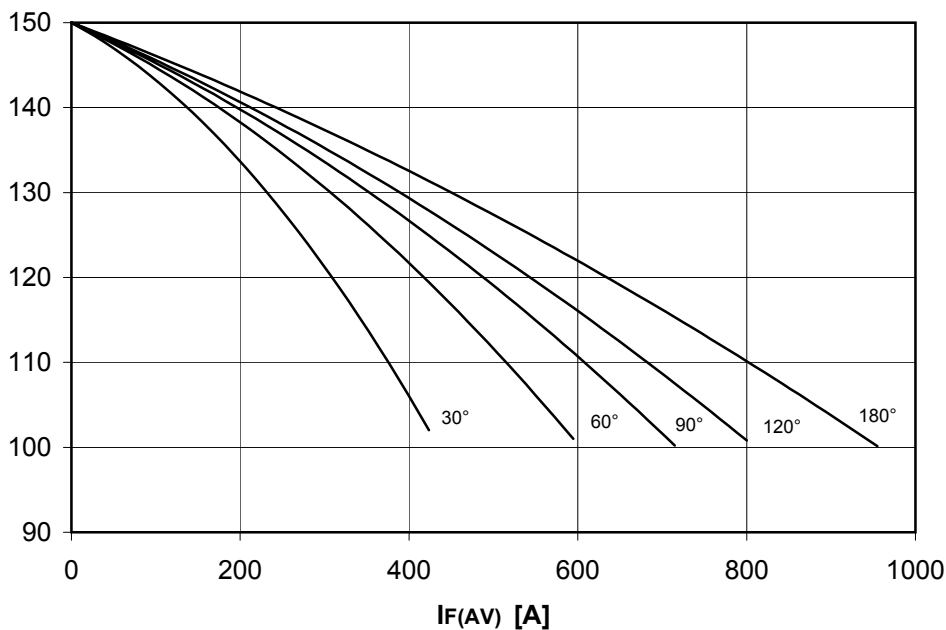


FINAL SPECIFICATION mar 01 - ISSUE : 1

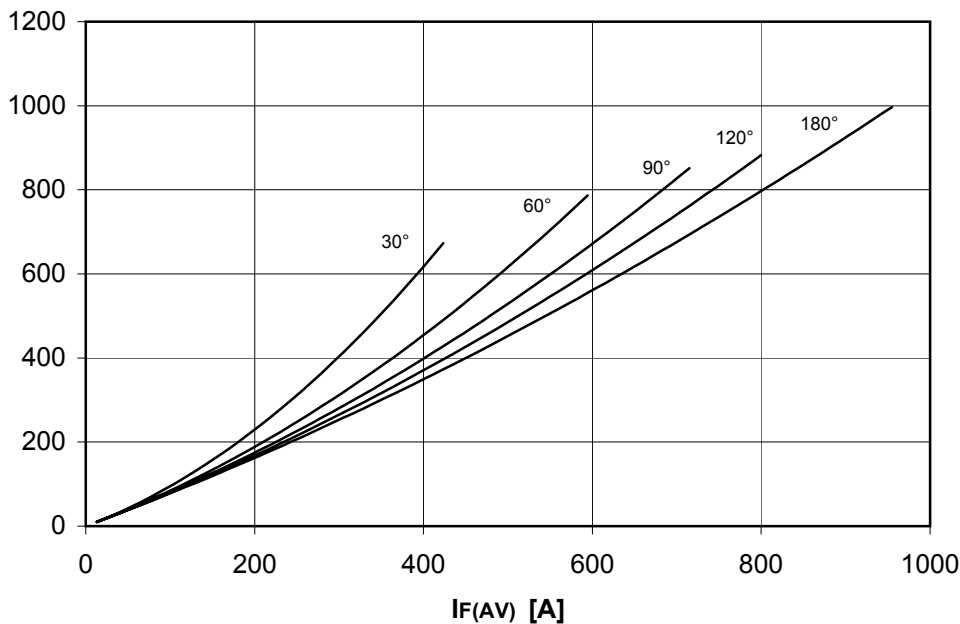
DISSIPATION CHARACTERISTICS

SINE WAVE

T_{case} [°C]



P_{F(AV)} [W]

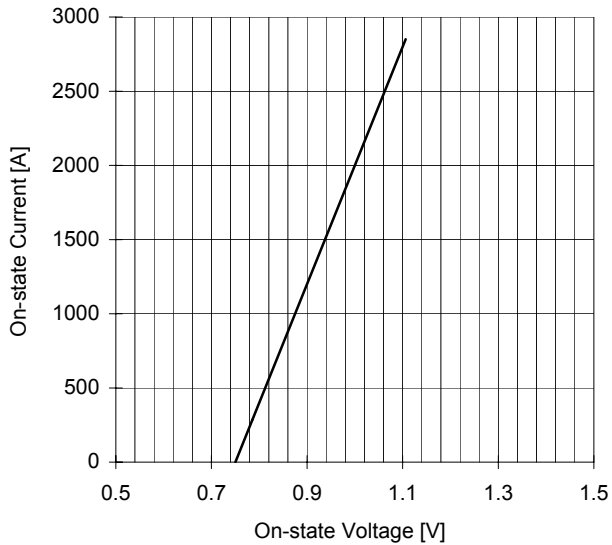


ADS1000 RECTIFIER SINGLE DIODES MODULE

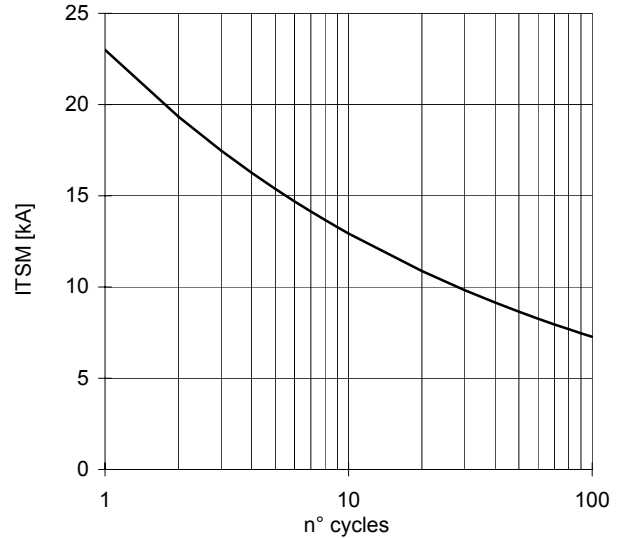


FINAL SPECIFICATION mar 01 - ISSUE : 1

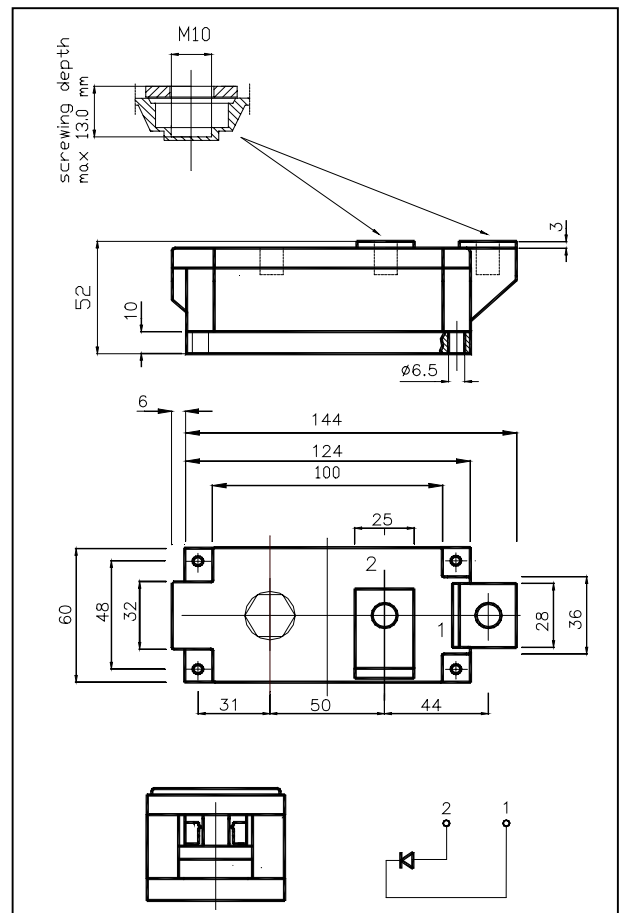
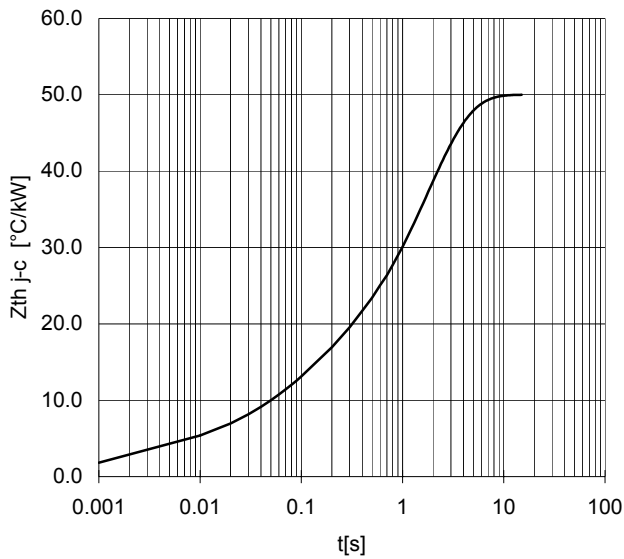
ON-STATE CHARACTERISTIC
T_j = 150 °C



SURGE CHARACTERISTIC
T_j = 150 °C



TRANSIENT THERMAL IMPEDANCE



All the characteristics given in this data sheet are guaranteed only with uniform clamping force, cleaned and lubricated heatsink, surfaces with flatness < .03 mm and roughness < 2 μm.
In the interest of product improvement POSEICO SPA reserves the right to change any data given in this data sheet at any time without previous notice.
If not stated otherwise the maximum value of ratings (symbols over shaded background) and characteristics is reported.

Distributed by

