



POSEICO SPA
Power SEMiconductors Italian COrporation

POSEICO SPA
Via N. Lorenzi 8, 16152 Genova - ITALY
Tel. +39 010 6556234 - Fax +39 010 6557519
Sales Office:
Tel. +39 010 6556775 - Fax +39 010 6442510

RECTIFIER DIODES MODULE

ADD700

- *Full ermetic packaging
- *Industrial compatible packaging
- *Insulation using AlN substrate
- *6KVrms insulation voltage available on request
- *Contact screws available on request

Repetitive voltage up to **2800 V**
Mean on-state current **725 A**
Surge current **17.9 kA**

FINAL SPECIFICATION

mar 01 - ISSUE : 03

Symbol	Characteristic	Conditions	T _j [°C]	Value	Unit
BLOCKING					
V _{RRM}	Repetitive peak reverse voltage		150	2800	V
V _{RSM}	Non-repetitive peak reverse voltage		150	2900	V
I _{RRM}	Repetitive peak reverse current		150	50	mA
CONDUCTING					
I _{F(AV)}	Mean on-state current	180° sin, 50Hz, T _c =100°C		725	A
I _{F(AV)}	Mean on-state current	180° sin. 50Hz, T _c =55°C		1150	A
I _{FSM}	Surge on-state current	sine wave, 10 ms	150	17.9	kA
I ² t	I ² t	without reverse voltage		1602 x1E3	A ² s
V _F	On-state voltage	On-state current = 1600 A	150	1.266	V
V _{F(TO)}	Threshold voltage		150	0.85	V
r _F	On-state slope resistance		150	0.260	mohm
MOUNTING					
R _{th(j-c)}	Thermal impedance	Junction to case, per element		50	°C/kW
R _{th(c-h)}	Thermal impedance	Case to heatsink, per element		20	°C/kW
T _j	Operating junction temperature			-30 / 150	°C
V _{ins}	RMS insulation voltage	50Hz, circuit to base,all terminal shorted	25	4500(*)	V
T	Mounting torque	Case to heatsink		4 to 6	Nm
		Busbars to terminals		12 to 18	Nm
	Mass			1500	g

ORDERING INFORMATION : ADD700 S 28
standard specification —┘┘ VRRM/100

(*) 6000V available on request.
Add HVI to the desired code in phase
of order, i.e. ADD700S28HVI

ADD700 RECTIFIER DIODES MODULE

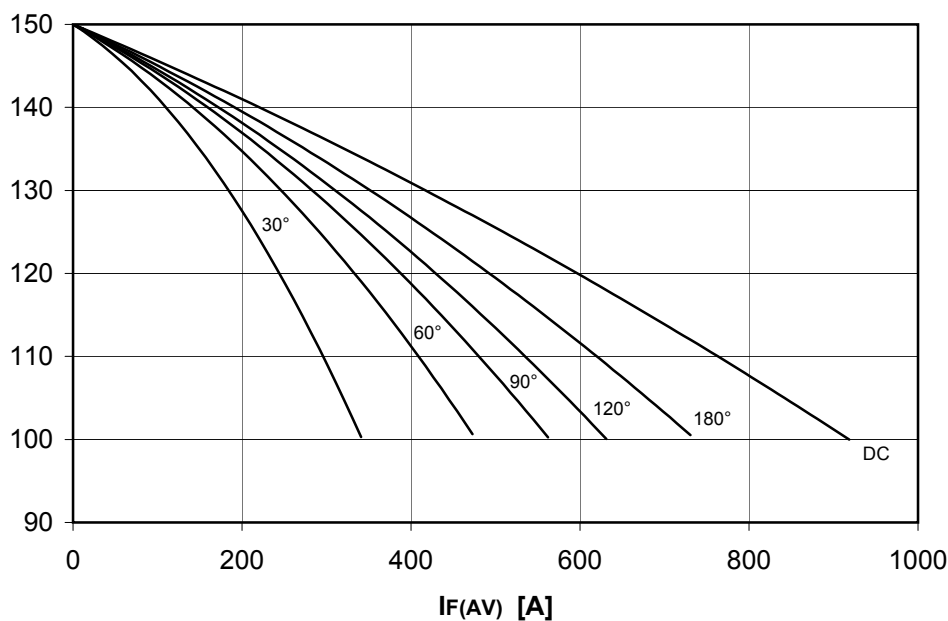


FINAL SPECIFICATION mar 01 - ISSUE : 03

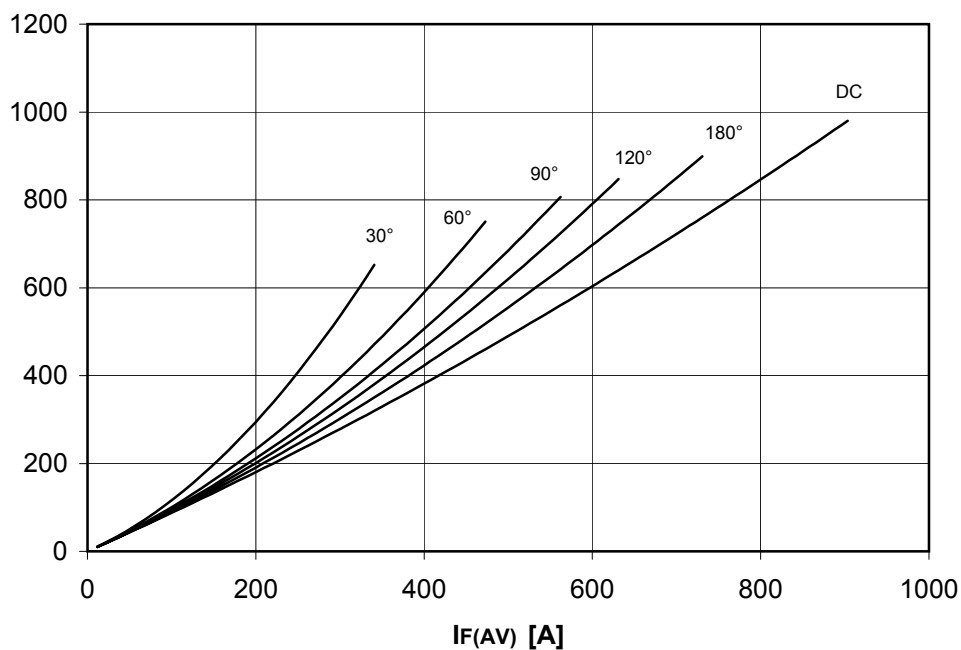
DISSIPATION CHARACTERISTICS

SQUARE WAVE

Tcase [°C]



PF(AV) [W]



ADD700 RECTIFIER DIODES MODULE

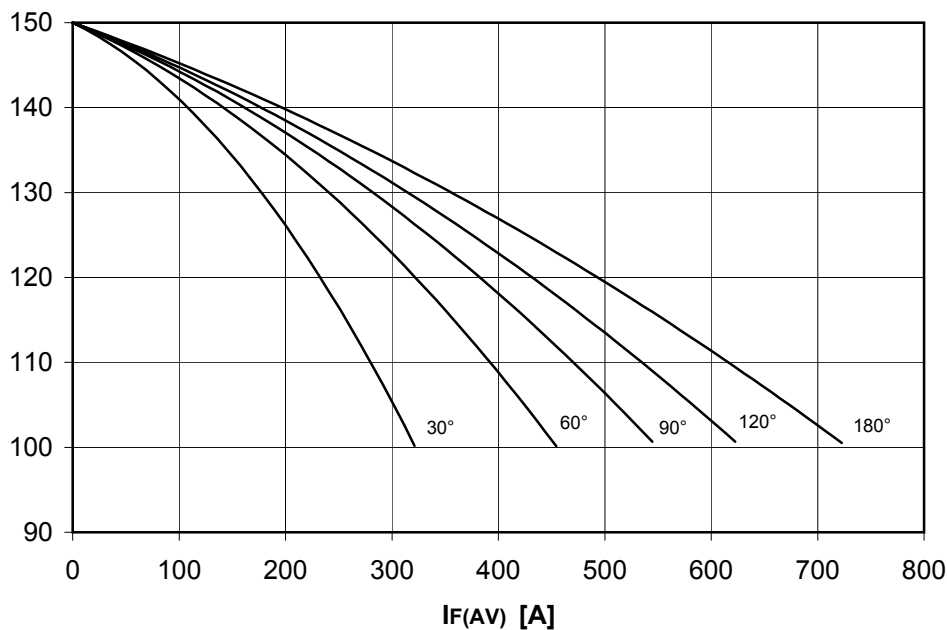


FINAL SPECIFICATION mar 01 - ISSUE : 03

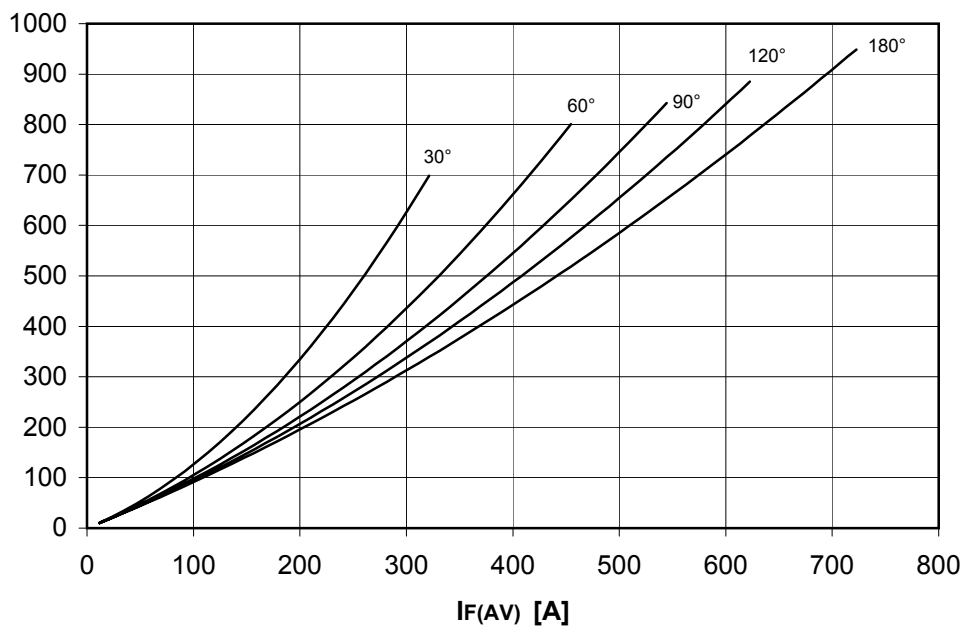
DISSIPATION CHARACTERISTICS

SINE WAVE

T_{case} [°C]



P_{F(AV)} [W]

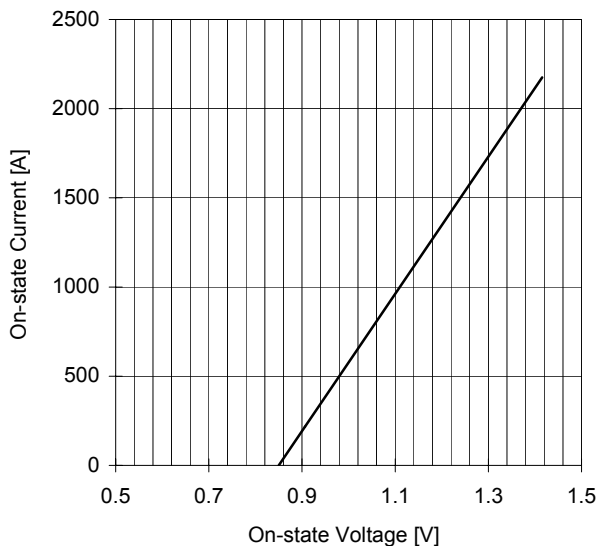


ADD700 RECTIFIER DIODES MODULE

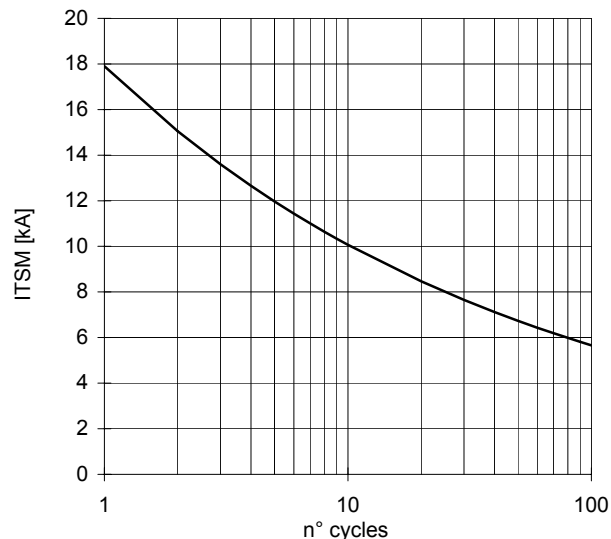


FINAL SPECIFICATION mar 01 - ISSUE : 03

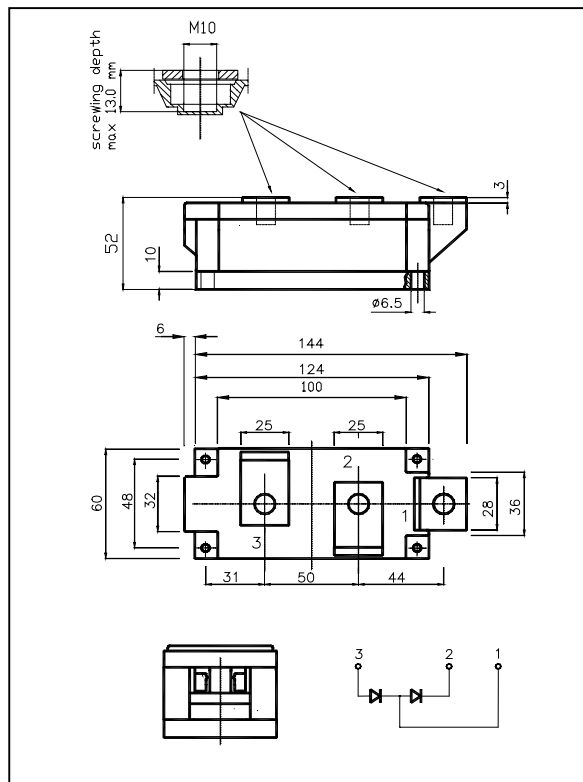
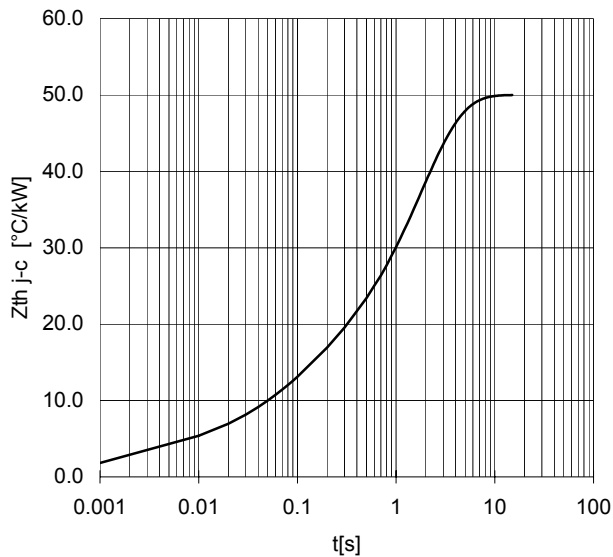
ON-STATE CHARACTERISTIC
Tj = 150 °C



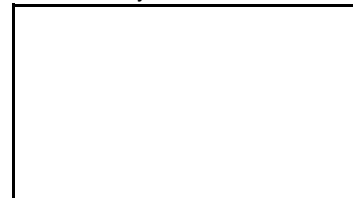
SURGE CHARACTERISTIC
Tj = 150 °C



TRANSIENT THERMAL IMPEDANCE



Distributed by



All the characteristics given in this data sheet are guaranteed only with uniform clamping force, cleaned and lubricated heatsink, surfaces with flatness < .03 mm and roughness < 2 μm.
In the interest of product improvement POSEICO SPA reserves the right to change any data given in this data sheet at any time without previous notice.
If not stated otherwise the maximum value of ratings (symbols over shaded background) and characteristics is reported.