

HF9515**1/2 CUBIC INCH 2 FORM C
HERMETICALLY SEALED ELECTRO MAGNETIC RELAY****Features**

- Fore balanced
- 10A contacts switching capability
- Failure rate can be level L
- High ambient applicability
- All metal welded construction
- Hermetically welded and marked by laser

AMBIENT ADAPTABILITY

| Ambient grade | I | II | III |
|---------------------------|---|---|---|
| Ambient temperature | -55 °C to 85 °C | -55 °C to 85 °C | -65 °C to 125 °C |
| Humidity | 98%, 40 °C | | |
| Low air pressure | 58.53 kPa | 4.39 kPa | 4.39 kPa |
| Sine vibration | Frequency | 10 Hz to 1000 Hz | 10 Hz to 2000 Hz |
| | Acceleration | 147 m/s ² | 196 m/s ² |
| Shock resistance | 490 m/s ² | 980 m/s ² | 1960 m/s ² |
| Random vibration | 10 (m/s ²) ² /Hz | 20 (m/s ²) ² /Hz | 40 (m/s ²) ² /Hz |
| Steady-state acceleration | 147 m/s ² | 294 m/s ² | 490 m/s ² |

CONTACT DATA

| Ambient grade | I | II | III |
|---------------------------------------|-----------------|-------|--------|
| Arrangement | 1 C | | |
| Contact resistance or voltage drop | Initial max. | 0.15Ω | 0.01Ω |
| | After life max. | 0.25V | 0.125V |
| Failure level | Level L | | |

Contact and life ratings

| Type | Contact load | | Electrical life min. |
|-----------|--------------|--------------------------------|-------------------------|
| | 28Vd.c. | 115Va.c. 400Hz Single phase | |
| Resistive | 10A | 10A | 1 x 10 ⁶ OPS |
| Inductive | 8A | 8A | 2 x 10 ⁴ OPS |
| Motor | 4A | | 1 x 10 ⁶ OPS |
| Lamp load | 2A | | 1 x 10 ⁶ OPS |



HONGFA HERMETICALLY SEALED RELAY

SPECIFICATION

| Ambient grade | | I | II | III |
|---|---|----------------------------|--|--|
| Insulation resistance min. | Initial | 100 MΩ (@ 500 Vd.c.) | 100 MΩ (@ 500 Vd.c.) | 100 MΩ (@ 500 Vd.c.) |
| | After life or after testing | 50 MΩ (@ 500 Vd.c.) | 50 MΩ (@ 500 Vd.c.) | 50 MΩ (@ 500 Vd.c.) |
| Dielectric strength min. (Normal condition) | Between coil & cover | 1000 Vr.m.s. | 1000 Vr.m.s. | 1000 Vr.m.s. |
| | Between other insulation parts (initial) | 1250 Vr.m.s. | 1250 Vr.m.s. | 1250 Vr.m.s. |
| | Between other insulation parts (after life testing) | 1000 Vr.m.s. | 1000 Vr.m.s. | 1000 Vr.m.s. |
| Dielectric strength min. (Low air pressure condition) | | 350 Vr.m.s. | 350 Vr.m.s. | 350 Vr.m.s. |
| Leakage rate max. | | 1 Pa·cm ³ /s | 1 x 10 ⁻¹ Pa·cm ³ /s | 1 x 10 ⁻³ Pa·cm ³ /s |
| Operate time max. | | 10 ms | | |
| Release time max. | | 10 ms | | |
| Mounting style | | See the mounting dimension | | |
| Terminals | | See the terminal styles | | |
| Work position | | Random | | |
| Weight max. | | 46 g | | |

COIL DATA

| | |
|---------------------|--------------|
| Norminal coil power | Approx. 2.8W |
|---------------------|--------------|

Coil Version

| Order Number | Coil voltage | | at 25 °C | | | | -65°C to 125°C | | | Pick-up voltage max. | |
|--------------|-----------------|------------|--------------------------|----------------------|-------------------|-----------------------|----------------------|-------------------|-----------------------|----------------------|--------------------------|
| | Nominal voltage | Value max. | Coil resistance (Ω) min. | Pick-up voltage max. | Hold voltage max. | Drop-out voltage min. | Pick-up voltage max. | Hold voltage max. | Drop-out voltage min. | High temp. test | Continuous electric test |
| 006 | 6 | 7.3 | 18 | 3.2 | 1.6 | 0.4 | 4.5 | 2.3 | 0.25 | 5 | 5.7 |
| 012 | 12 | 14.5 | 72 | 6.5 | 3.3 | 0.75 | 9.0 | 4.5 | 0.5 | 9.9 | 11.25 |
| 028 | 28 | 29 | 280 | 15.5 | 5.5 | 2.3 | 20.0 | 7 | 1.5 | 21.0 | 25.0 |

Notes: We can offer many kinds of coil voltage under the requirement of users.

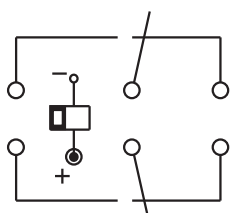
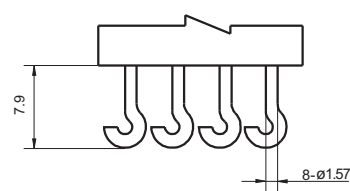
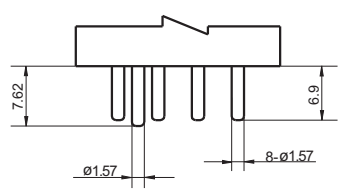
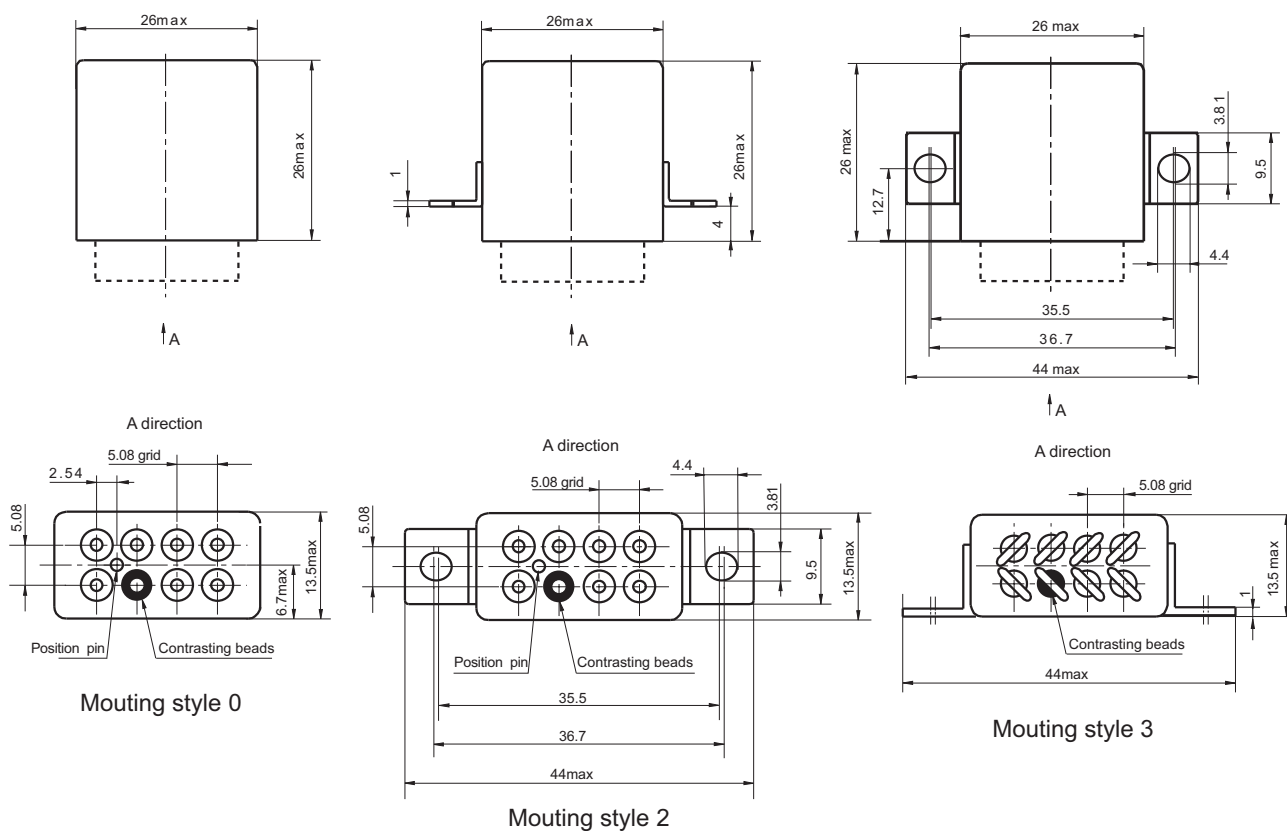
ORDERING INFORMATION

| | | | | | | |
|-----------------|--|------|---|----|---|------|
| Type | HF9515 | -028 | L | -0 | 2 | - II |
| Order Number | 006、012、028 | | | | | |
| Failure Rate | L (level III products available) | | | | | |
| Mounting Style | 0, 2, 3 (See the mounting dimension) | | | | | |
| Terminals Style | 2, 4 (See " Terminal styles " below) | | | | | |
| Ambient Grade | I : level I II : level II Nil: level III (With failure rate requirement) | | | | | |

OUTLINE DIMENSIONS AND WIRING DIAGRAM

Unit:mm

Outline Dimension



Disclaimer

This datasheet is for the customers' reference. All the specifications are subject to change without notice.

© Xiamen Hongfa Electroacoustic Co., Ltd. All rights of Hongfa are reserved.